



Price

£190,000

Leasehold

2x  1x  1x 

**Belle Court, London
Road, Larkfield,
Aylesford, Kent, ME20**

OVER 60?

Secure this property
for up to **59% less!**

Wards
Helping you move forwards



Main features

- **Well presented first floor apartment with no forward chain**
- **Parking is stress free with your own allocated parking space**
- **No box rooms to worry about here - both bedrooms are doubles**
- **Sociable kitchen/living/dining room - ideal for entertaining**
- **Good commuter links by road & rail within easy reach**

Accommodation

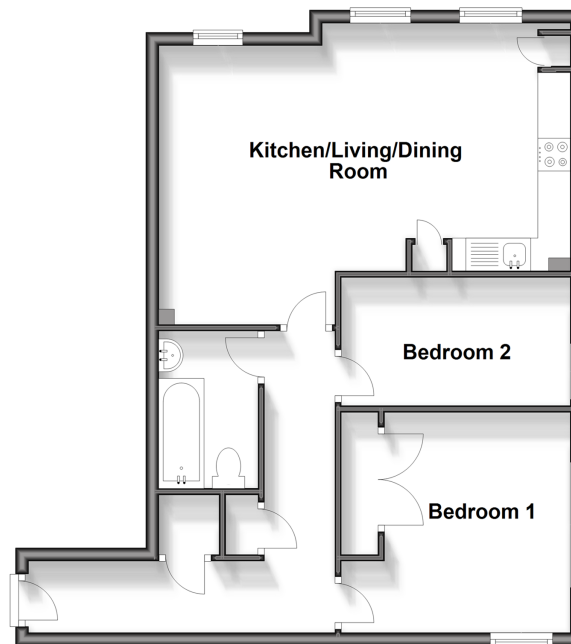
FIRST FLOOR

Entrance Hall
 Kitchen/Living/Dining Room: 20'10 x 13'11 (6.35m x 4.24m)
 Bedroom 1: 11'6 x 10'11 (3.51m x 3.33m)
 Bedroom 2: 11'6 x 6'3 (3.51m x 1.91m)
 Bathroom

OUTSIDE

Allocated Parking Space

First Floor
 Approx. 60.3 sq. metres (649.0 sq. feet)



Call Larkfield - 01732 847877 ■ wardsofkent.co.uk

■ Legal advice should be taken to verify fixtures/fittings, planning, alterations and/or lease details
 ■ Through a Homewise Home For Life Plan people aged 60+ can secure this property for up to 59% less, by purchasing a Lifetime Lease.

■ Appliances & services are untested, dimensions are approximate and floor plans are not to scale



12934979/20231121/CK/JT