



Price

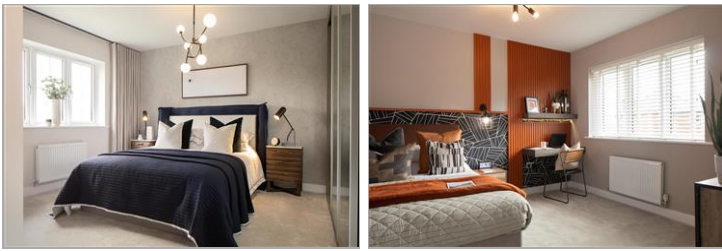
£580,000

Freehold

4x  2x  2x 

The Osbourne, The Sweetings, Off New
Road, East Malling, Kent, ME19

Wards
Helping you move forwards



Main features

- Stunning new home on a select & outstanding development
- Open plan kitchen/dining area - ideal for today's modern lifestyle
- Work from home in the study
- Fitted wardrobe & en-suite shower room to bedroom 1 adds luxury
- Single garage and two parking spaces

Accommodation

GROUND FLOOR

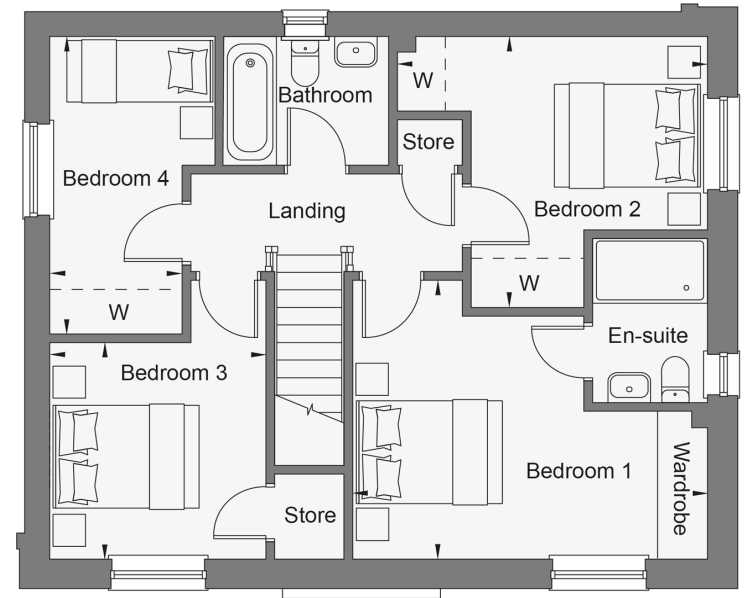
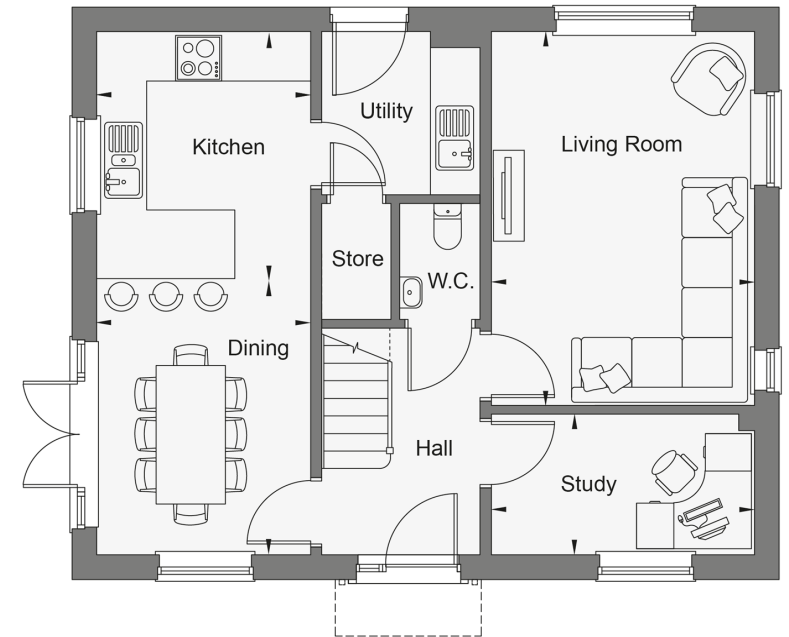
Entrance Hall
Cloakroom
Study: 11'3 x 6'1 (3.43m x 1.86m)
Living Room: 16'2 x 11'3 (4.93m x 3.43m)
Dining Area: 11'11 x 9'2 (3.63m x 2.80m)
Kitchen: 10'8 x 9'2 (3.25m x 2.80m)
Utility Room

FIRST FLOOR

Landing
Bedroom 1: 15'2 x 12'1 (4.63m x 3.69m)
En-Suite Shower Room
Bedroom 2: 13'3 x 11'9 (4.04m x 3.58m)
Bedroom 3: 9'4 x 9'3 (2.85m x 2.82m)
Bedroom 4: 12'10 x 7'1 (3.91m x 2.16m)
Bathroom

OUTSIDE

Front & Rear Gardens
Garage
2 Parking Spaces



Call Larkfield - 01732 847877 ■ wardsofkent.co.uk

- If buying to let, the energy rating will need to be improved to at least 'E' rating before you can let the property
- Legal advice should be taken to verify fixtures/fittings, planning, alterations and/or lease details
- Appliances & services are untested, dimensions are approximate and floor plans are not to scale



12934980/20231113/CK/RT