



Price

£555,000

Freehold

4x  2x  1x 

**The Spinney, The
Sweetings, New Road,
East Malling, Kent, ME19**

Wards
Helping you move forwards



Main features

- Stunning 4 bedroom new detached house on a outstanding development
- Open plan kitchen/dining room - ideal for today's modern lifestyle
- Fitted wardrobe & en-suite shower room to bedroom 1 adds luxury
- Handy ground floor cloakroom
- Single garage & 2 allocated parking spaces makes parking a breeze

Accommodation

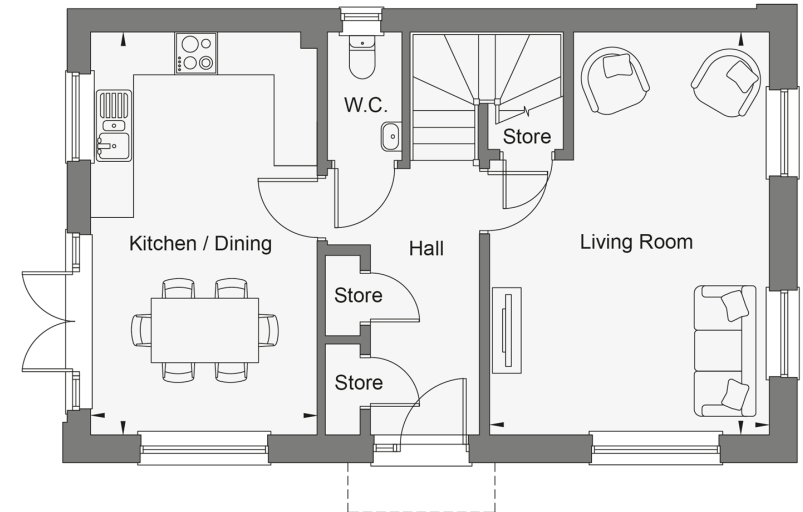
GROUND FLOOR

Entrance Hall

Cloakroom

Kitchen/Dining Room: 18'6 x 10'5 (5.64m x 3.18m)

Living Room: 18'6 x 12'10 (5.64m x 3.91m)



FIRST FLOOR

Landing

Bedroom 1: 12'3 x 11'2 (3.74m x 3.41m)

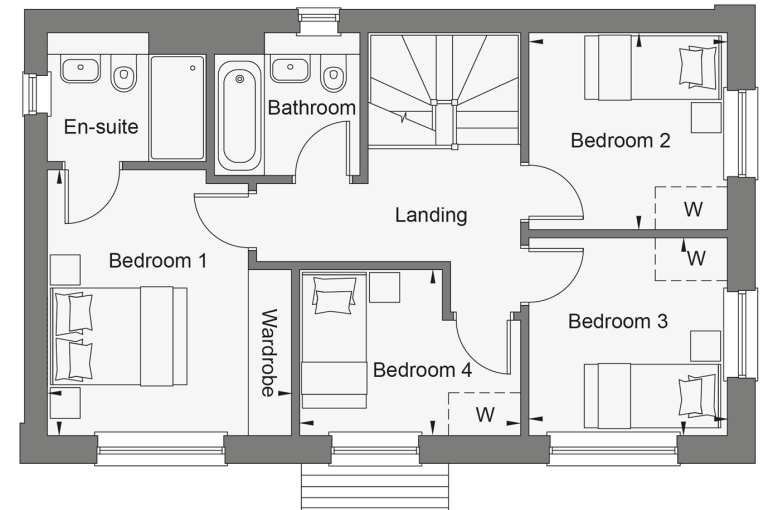
En-Suite Shower Room

Bedroom 2: 9'1 x 9'1 (2.77m x 2.77m)

Bedroom 3: 9'1 x 9'1 (2.77m x 2.77m)

Bedroom 4: 10'1 x 7'8 (3.08m x 2.34m)

Bathroom



OUTSIDE

Front & Rear Gardens

Garage

2 Allocated Parking Spaces

Call Larkfield - 01732 847877 ■ wardsofkent.co.uk

- If buying to let, the energy rating will need to be improved to at least 'E' rating before you can let the property
- Legal advice should be taken to verify fixtures/fittings, planning, alterations and/or lease details
- Appliances & services are untested, dimensions are approximate and floor plans are not to scale



12934982/20231113/CK/JT