



Price
£385,000

Freehold

3x  1x  1x 

**Swallow Road, Larkfield,
Kent, ME20**

OVER 60?

Secure this property
for up to **59% less!**

Wards
Helping you move forwards



Main features

- Extended & well presented throughout
- No chain worries - this property is being sold chain free
- Useful ground floor cloakroom
- Relax in the sunny & secluded rear garden
- Close to good schools, amenities, leisure facilities & commuter links

Accommodation

GROUND FLOOR

Entrance Hall

Cloakroom

Lounge: 18'10 x 9'10 (5.74m x 3.00m)

Dining Area: 12'6 x 8'8 (3.81m x 2.64m)

Kitchen: 12'2 x 10'1 (3.71m x 3.08m)

FIRST FLOOR

Landing

Bedroom 1: 12'2 x 10'2 (3.71m x 3.10m)

Bedroom 2: 10'6 x 9'10 (3.20m x 3.00m)

Bedroom 3: 9'10 x 7'11 (3.00m x 2.41m)

Bathroom

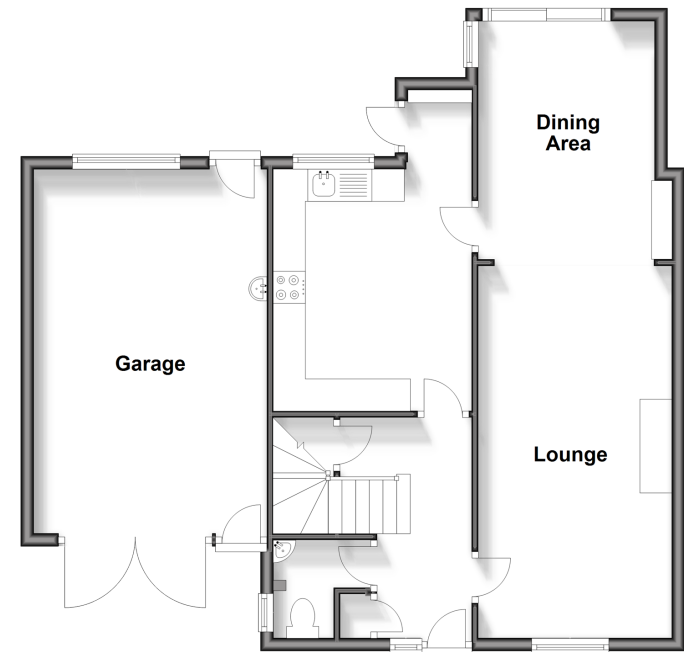
OUTSIDE

Driveway & Garage

Front & Rear Gardens

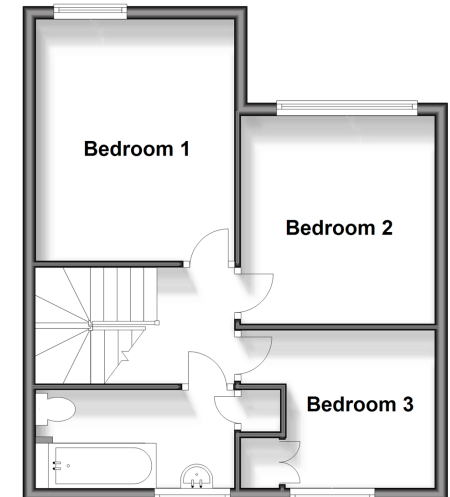
Ground Floor

Approx. 74.9 sq. metres (806.1 sq. feet)



First Floor

Approx. 40.6 sq. metres (436.5 sq. feet)



Call Larkfield - 01732 847877 ■ wardsof Kent.co.uk

- Legal advice should be taken to verify fixtures/fittings, planning, alterations and/or lease details
- Appliances & services are untested, dimensions are approximate and floor plans are not to scale
- Through a Homewise Home For Life Plan people aged 60+ can secure this property for up to 59% less, by purchasing a Lifetime Lease.



12934991/20240423/CK/JT