



Guide Price
£365,000

Freehold

3x  1x  1x 

**High Street, East
Malling, Kent, ME19**

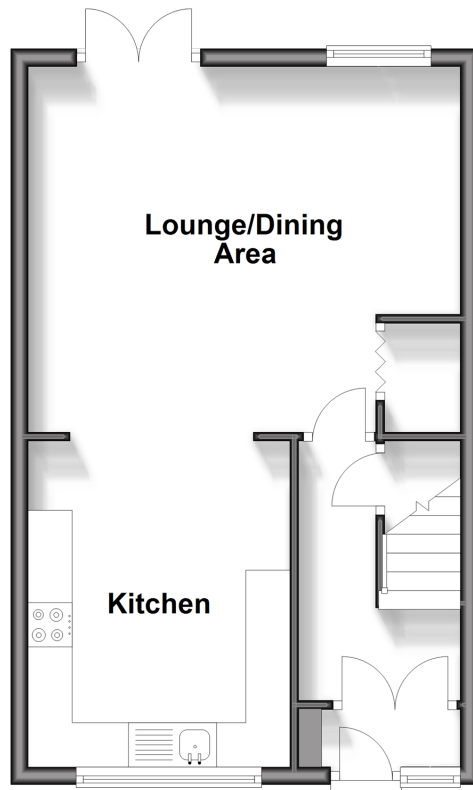
OVER 60?

Secure this property
for up to **59% less!**

Wards
Helping you move forwards

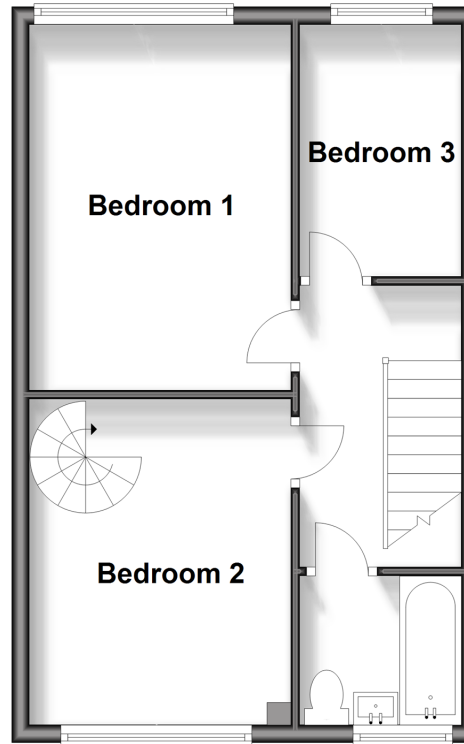
Ground Floor

Approx. 38.8 sq. metres (418.0 sq. feet)



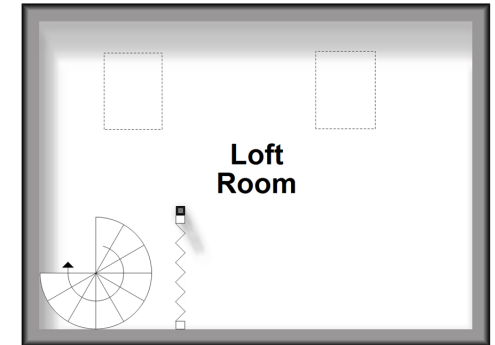
First Floor

Approx. 38.7 sq. metres (416.8 sq. feet)



Second Floor

Approx. 16.6 sq. metres (178.4 sq. feet)



Accommodation

GROUND FLOOR

Entrance Porch

Hallway

Kitchen: 12'0 x 9'8 (3.66m x 2.95m)

Lounge/Dining Area: 16'0 at widest point x 13'6 (4.88m x 4.12m)

FIRST FLOOR

Landing

Bedroom 1: 13'5 x 9'8 (4.09m x 2.95m)

Bedroom 2: 12'0 x 9'9 (3.66m x 2.97m)

Bedroom 3: 9'4 x 6'0 (2.85m x 1.83m)

Bathroom

SECOND FLOOR

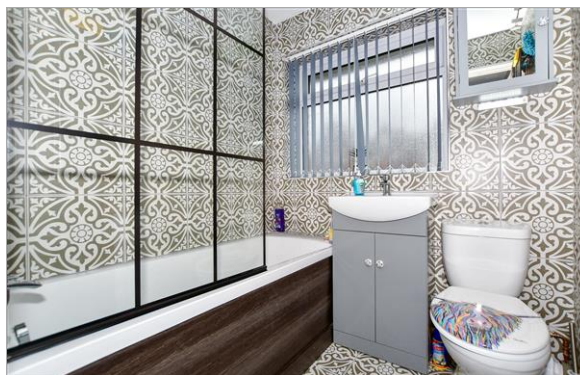
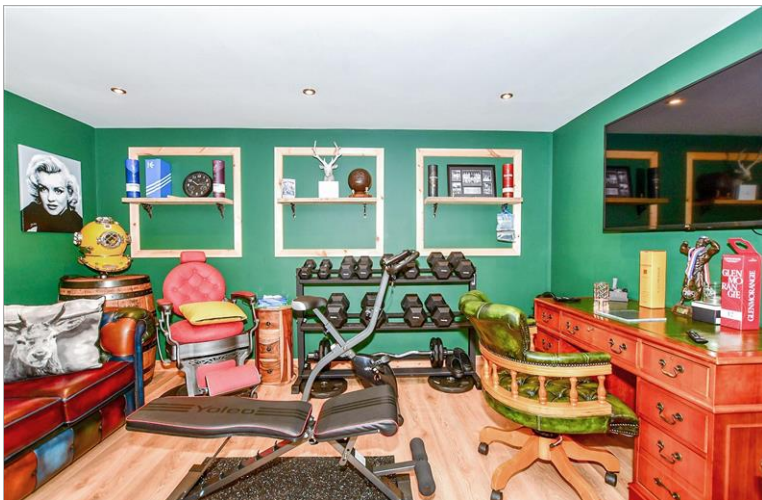
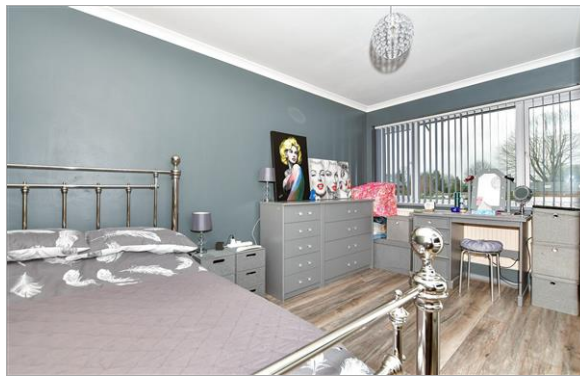
Loft Room: 15'5 x 11'6 (4.70m x 3.51m)

OUTSIDE

Front & Rear Gardens

Office/Outbuilding: 13'6 x 10'3 (4.12m x 3.13m)

Garage En-Bloc



Main features

- **Location, location** - set in the heart of the historic village of East Malling
- **Sociable kitchen & lounge/dining area** great for entertaining
- **The loft room is a wonderful bonus room** - accessed via bedroom 2
- **Relax in the private garden with decking** alongside the stream
- **Handy garage en-bloc nearby**



Nearest Schools

Primary Schools: St James the Great Primary and Nursery School 0.7 miles, Leybourne, St Peter and St Paul C of E Voluntary Aided Primary 1.2 miles, Brookfield Junior School 1.3 miles



Transport Information

Train Stations: East Malling 0.2 miles, West Malling 1.6 miles, Aylesford 2.1 miles



Address

High Street, East Malling, Kent, ME19



Directions

For directions to this property please contact us.



Wards
Helping you move forwards

Call Larkfield Branch 01732 847877 ■ wardsofkent.co.uk



- Legal advice should be taken to verify fixtures/fittings, planning, alterations and/or lease details
- Appliances & services are untested, dimensions are approximate and floor plans are not to scale
- Through a Homewise Home For Life Plan people aged 60+ can secure this property for up to 59% less, by purchasing a Lifetime Lease.



12935006/20240417/HJ20/RT