



**Price**  
**£260,000**

**Leasehold**

2x  2x  1x 

**The Lakes, Larkfield,  
Kent, ME20**

**OVER 60?**

Secure this property  
for up to **59% less!**

*Wards*  
Helping you move forwards





## Main features

- **Fabulous first floor apartment**
- **No forward chain means a simpler & quicker purchase**
- **Enjoy the luxury of an en-suite bathroom & a separate shower room**
- **Allocated parking makes life easy**
- **Stunning lake views sets this home apart from others**

## Accommodation

### FIRST FLOOR

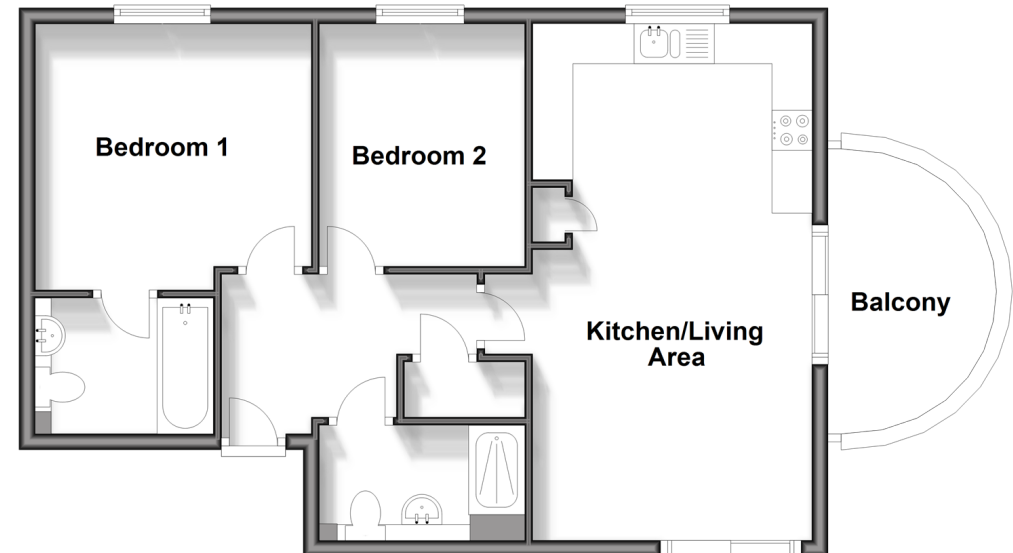
Entrance Hall  
 Shower Room  
 Kitchen/Living Area: 21'1 x 10'10 (6.43m x 3.30m)  
 Balcony  
 Bedroom 1: 11'3 x 10'10 (3.43m x 3.30m)  
 En-Suite Bathroom  
 Bedroom 2: 9'10 x 8'3 (3.00m x 2.52m)

### OUTSIDE

Allocated Parking  
 Communal Gardens  
 Communal Bike Store

### First Floor

Approx. 56.8 sq. metres (611.9 sq. feet)



**Call Larkfield - 01732 847877 ■ [wardsofkent.co.uk](http://wardsofkent.co.uk)**

■ Legal advice should be taken to verify fixtures/fittings, planning, alterations and/or lease details  
 ■ Through a Homewise Home For Life Plan people aged 60+ can secure this property for up to 59% less, by purchasing a Lifetime Lease.

■ Appliances & services are untested, dimensions are approximate and floor plans are not to scale



12935012/20240116/CK/RT