



Price
£450,000

Freehold

3x  1x  2x 

**London Road, Larkfield,
Aylesford, Kent, ME20**

OVER 60?

Secure this property
for up to **59% less!**

Wards
Helping you move forwards



Main features

- Extended to the ground floor & very well presented throughout
- Fantastic kitchen/diner - great for bringing the family together
- Handy ground floor cloakroom
- The park-like garden is a wonderful outdoor space to enjoy
- Excellent schools, amenities & commuter links within easy reach

Accommodation

GROUND FLOOR

Entrance Hall

Lounge: 12'10 x 10'10 (3.91m x 3.30m)

Cloakroom

Utility Area: 9'0 x 6'3 (2.75m x 1.91m)

Kitchen/Diner: 16'3 x 11'9 (4.96m x 3.58m)

Family Area: 11'1 x 10'5 (3.38m x 3.18m)

FIRST FLOOR

Landing

Bedroom 1: 12'1 x 8'6 (3.69m x 2.59m)

Bedroom 2: 13'0 x 10'7 (3.97m x 3.23m)

Bedroom 3: 6'10 x 6'5 (2.08m x 1.96m)

Bathroom

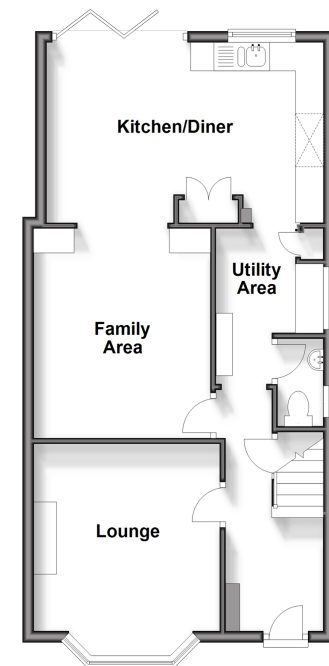
OUTSIDE

Driveway

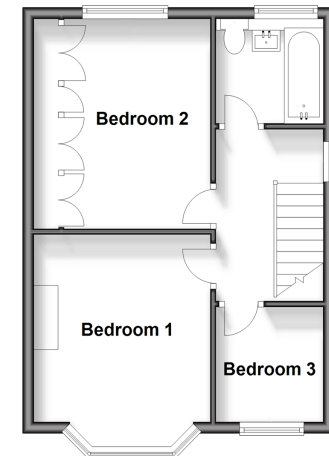
Front & Rear Gardens

Garage/Office

Ground Floor
Approx. 53.2 sq. metres (573.0 sq. feet)



First Floor
Approx. 37.0 sq. metres (398.0 sq. feet)



Call Larkfield - 01732 847877 ■ wardsof Kent.co.uk

- Legal advice should be taken to verify fixtures/fittings, planning, alterations and/or lease details
- Appliances & services are untested, dimensions are approximate and floor plans are not to scale
- Through a Homewise Home For Life Plan people aged 60+ can secure this property for up to 59% less, by purchasing a Lifetime Lease.



12935014/20240115/CK/JT