



OVER 60?

Secure this property
for up to **59% less!**

Price
£325,000

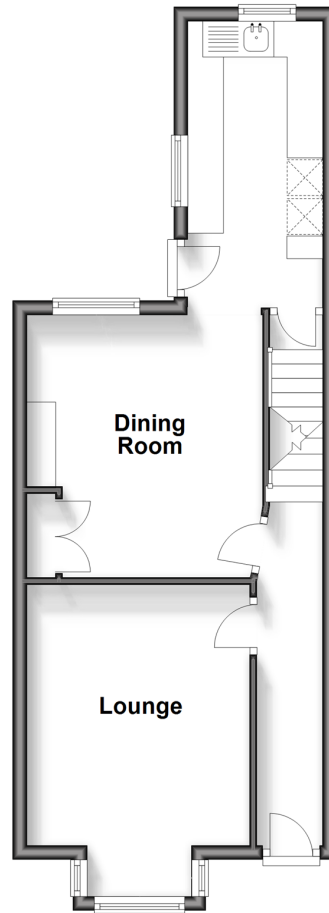
Freehold

3x  1x  2x 

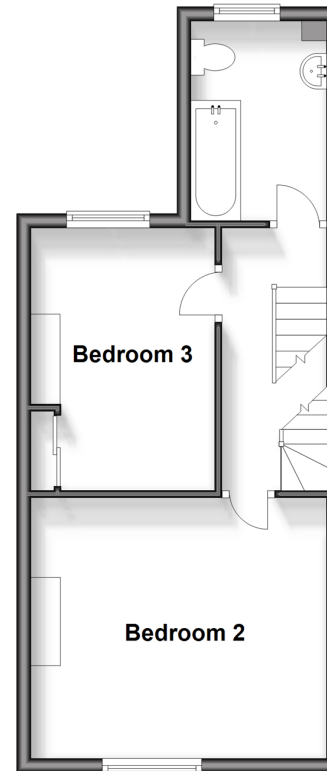
**London Road, Ditton,
Aylesford, Kent, ME20**

Wards
Helping you move forwards

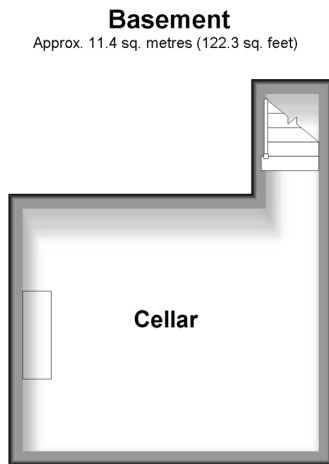
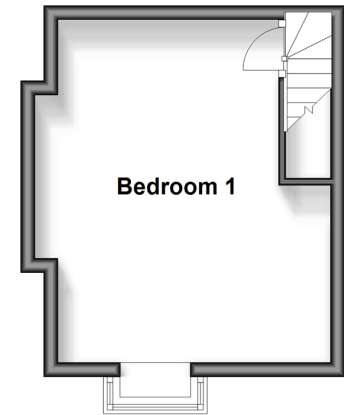
Ground Floor
Approx. 39.4 sq. metres (423.9 sq. feet)



First Floor
Approx. 36.3 sq. metres (390.3 sq. feet)



Second Floor
Approx. 19.6 sq. metres (211.0 sq. feet)



Accommodation

GROUND FLOOR

Entrance Hall
Lounge: 11'9 x 10'3 (3.58m x 3.13m)
Dining Room: 12'0 x 10'10 (3.66m x 3.30m)
Kitchen: 13'1 x 6'0 (3.99m x 1.83m)

BASEMENT

Cellar: 13'3 x 11'1 (4.04m x 3.38m)

FIRST FLOOR

Landing
Bedroom 2: 13'7 x 11'9 (4.14m x 3.58m)
Bedroom 3: 12'1 x 8'4 (3.69m x 2.54m)
Bathroom

SECOND FLOOR

Landing
Bedroom 1: 15'8 x 12'6 (4.78m x 3.81m)

OUTSIDE

Front & Rear Gardens



Main features

- Charming period home that's full of character
- Useful cellar - ideal for storage
- Soak up the sun in the lovely sunny & private low maintenance rear garden
- Commuting is a breeze with great connections for both road & rail within easy reach
- Well reputed schools for all ages easily accessible - some within walking distance & close to good bus route for secondary schools



Nearest Schools

Primary Schools: Ditton C of E Junior School 0.3 miles, Aylesford Primary 0.7 miles, Brookfield Junior School 0.9 miles. Secondary Schools: Aylesford School 0.7 miles, The Malling School 1.3 miles, St Augustine Academy 2.7 miles



Transport Information

Train Stations: Aylesford 0.6 miles, East Malling 1.7 miles, West Malling 1.7 miles



Address

London Road, Ditton, Aylesford, Kent, ME20



Directions

For directions to this property please contact us.



Wards
Helping you move forwards

Call Larkfield Branch 01732 847877 ■ wardsofkent.co.uk



- Legal advice should be taken to verify fixtures/fittings, planning, alterations and/or lease details
- Appliances & services are untested, dimensions are approximate and floor plans are not to scale
- Through a Homewise Home For Life Plan people aged 60+ can secure this property for up to 59% less, by purchasing a Lifetime Lease.



12935022/20240306/CK/JT