



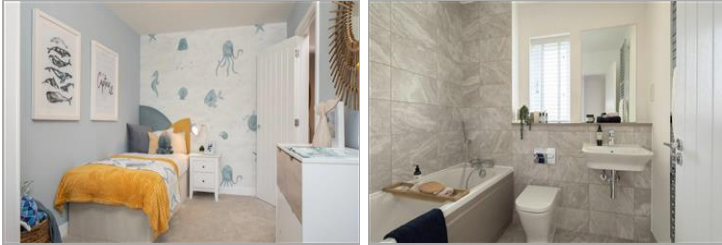
**Price**  
**£439,000**  
**Freehold**

3x  2x  1x 

The Frogmore, The Sweetings, Off New  
Road, East Malling, West Malling, ME19

*Wards*  
Helping you move forwards





## Main features

- **Stunning 3 bedroom semi-detached home**
- **Open plan kitchen/dining room - ideal for today's modern lifestyle**
- **Fitted wardrobe & en-suite shower room to bedroom 1 adds luxury**
- **Useful cloakroom/utility**
- **Parking is easy with two allocated spaces**

## Accommodation

### GROUND FLOOR

Entrance Hall

Living Room: 15'0 x 11'2 (4.58m x 3.41m)

Kitchen/Dining Room: 15'2 x 12'3 (4.63m x 3.74m)

Cloakroom/Utility

### FIRST FLOOR

Landing

Bedroom 1: 11'2 x 11'2 (3.41m x 3.41m)

En-Suite Shower Room

Bedroom 2: 10'3 x 9'7 (3.13m x 2.92m)

Bedroom 3: 10'9 x 8'5 (3.28m x 2.57m)

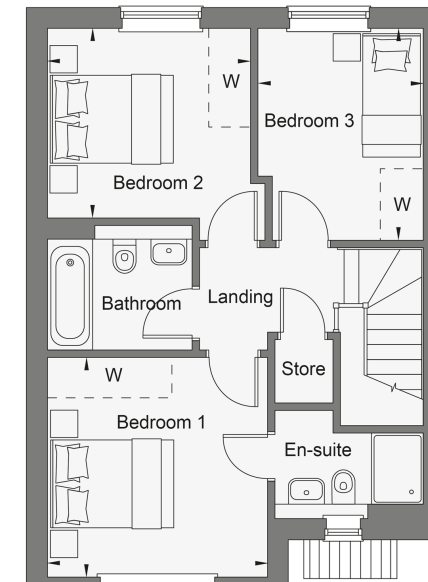
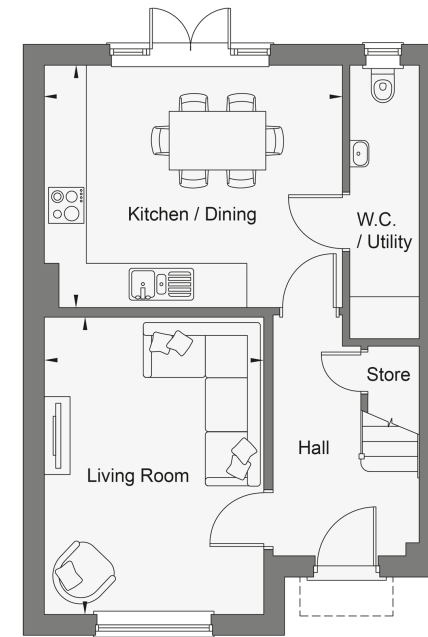
Bathroom

### OUTSIDE

Front Garden

Rear Garden

Allocated Parking



**Call Larkfield - 01732 847877 ■ [wardsofkent.co.uk](http://wardsofkent.co.uk)**

- If buying to let, the energy rating will need to be improved to at least 'E' rating before you can let the property
- Legal advice should be taken to verify fixtures/fittings, planning, alterations and/or lease details
- Appliances & services are untested, dimensions are approximate and floor plans are not to scale



12935024/20240108/CK/RT