



Price

£230,000

2x  2x  1x 

**Hillberry Park,
Wateringbury Road,
East Malling, Kent, ME19**

Wards
Helping you move forwards



Main features

- Larger Kensington style offering extra space - immaculate throughout
- The bright living area would be the envy of many houses
- Lovely kitchen - sleek lines with integrated appliances & an island too
- Enjoy your own private garden & generous decking area
- Wonderful semi-rural location

Accommodation

GROUND FLOOR

Entrance Hall

Living Area: 20'7 (6.28m) narrowing to 9'6 (2.90m) x 19'0 (5.80m)

Kitchen: 14'1 x 9'6 (4.30m x 2.90m)

Hallway

Bedroom 1: 12'4 x 9'10 (3.76m x 3.00m)

En-Suite Shower Room

Dressing Room

Bedroom 2: 9'5 x 7'7 (2.87m x 2.31m)

Bathroom

OUTSIDE

Communal Parking

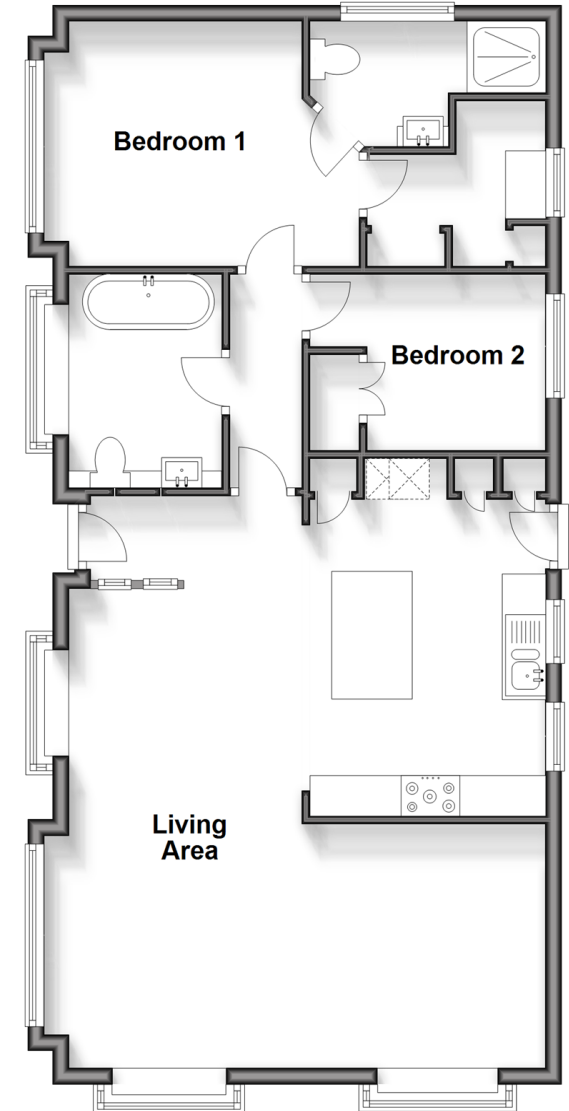
Front & Side Decking Area

Side & Rear Gardens

Shed

Ground Floor

Approx. 78.6 sq. metres (845.7 sq. feet)



Call Larkfield - 01732 847877 ■ wardsofkent.co.uk

- If buying to let, the energy rating will need to be improved to at least 'E' rating before you can let the property
- Legal advice should be taken to verify fixtures/fittings, planning, alterations and/or lease details
- Appliances & services are untested, dimensions are approximate and floor plans are not to scale



12935059/20240515/RT/RT