



Price
£725,000

Freehold

4x  2x  1x 

**Woodlands Road,
Ditton, Kent, ME20**

OVER 60?

Secure this property
for up to **59% less!**

Wards
Helping you move forwards



Main features

- Immaculate home set in the popular Holtwood area
- Outstanding kitchen/family area - perfect for today's lifestyle
- An en-suite shower room & a bathroom adds luxury to the home
- Lovely sunny & secluded garden
- Excellent commuter links by road & rail close by

Accommodation

GROUND FLOOR

Entrance Hall

Cloakroom

Lounge: 19'2 x 11'4 (5.85m x 3.46m)

Kitchen/Family Area: 24'6 x 22'6 (7.47m x 6.86m)

Utility Room

FIRST FLOOR

Landing

Bedroom 1: 11'4 x 9'7 (3.46m x 2.92m)

En-Suite Shower Room

Bedroom 2: 12'6 x 11'6 (3.81m x 3.51m)

Bedroom 3: 12'7 x 9'2 (3.84m x 2.80m)

Bedroom 4: 8'4 x 8'4 (2.54m x 2.54m)

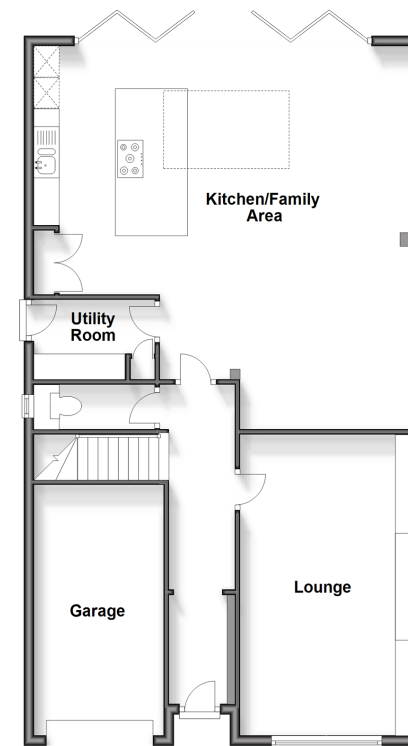
Bathroom

OUTSIDE

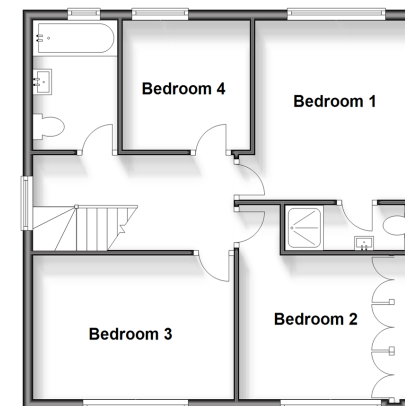
Driveway & Garage

Rear Garden

Ground Floor
Approx. 100.3 sq. metres (1079.5 sq. feet)



First Floor
Approx. 55.6 sq. metres (598.7 sq. feet)



Call Larkfield - 01732 847877 ■ wardsof Kent.co.uk

- Legal advice should be taken to verify fixtures/fittings, planning, alterations and/or lease details
- Appliances & services are untested, dimensions are approximate and floor plans are not to scale
- Through a Homewise Home For Life Plan people aged 60+ can secure this property for up to 59% less, by purchasing a Lifetime Lease.



12935062/20240429/CK/JT