



Price
£325,000

Freehold

3x  1x  1x 

**Larkspur Road, East
Malling, Kent, ME19**

OVER 60?

Secure this property
for up to **59% less!**

Wards
Helping you move forwards



Main features

- Well presented throughout
- Sociable kitchen/diner - great for entertaining
- Sunny garden with lovely summer house to enjoy
- Handy large garden shed - ideal for hobbies
- Walk to good schools & shops - making life easy

Accommodation

GROUND FLOOR

Entrance Hall

Lounge: 17'4 x 10'9 (5.29m x 3.28m)

Kitchen/Diner: 14'5 x 13'1 (4.40m x 3.99m)

Lobby

FIRST FLOOR

Landing

Bedroom 1: 11'2 x 10'0 (3.41m x 3.05m)

Bedroom 2: 11'0 x 9'3 (3.36m x 2.82m)

Bedroom 3: 8'0 x 7'8 (2.44m x 2.34m)

Bathroom

OUTSIDE

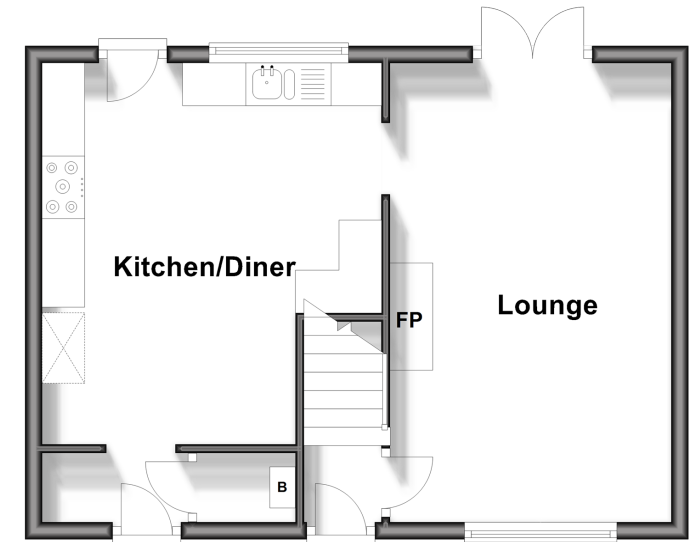
Front & Rear Gardens

Summer House

Shed

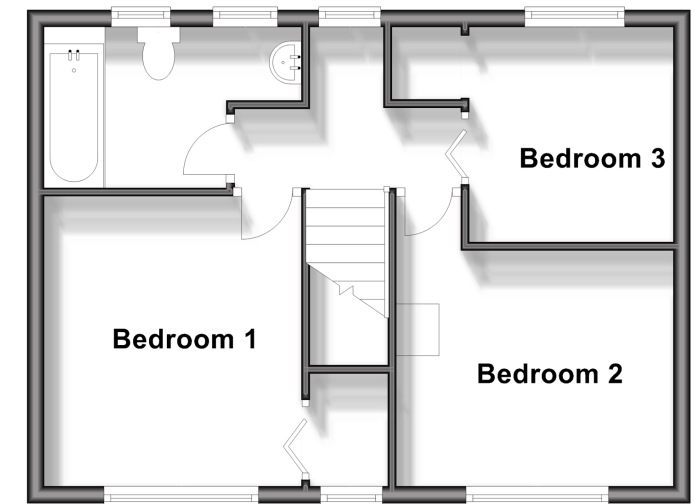
Ground Floor

Approx. 39.6 sq. metres (425.8 sq. feet)



First Floor

Approx. 39.6 sq. metres (425.8 sq. feet)



Call Larkfield - 01732 847877 ■ wardsofkent.co.uk

- Legal advice should be taken to verify fixtures/fittings, planning, alterations and/or lease details
- Appliances & services are untested, dimensions are approximate and floor plans are not to scale
- Through a Homewise Home For Life Plan people aged 60+ can secure this property for up to 59% less, by purchasing a Lifetime Lease.



12935089/20240319/CK/JT