

OVER 60?

Secure this property
for up to **59% less!**



Price

£875,000

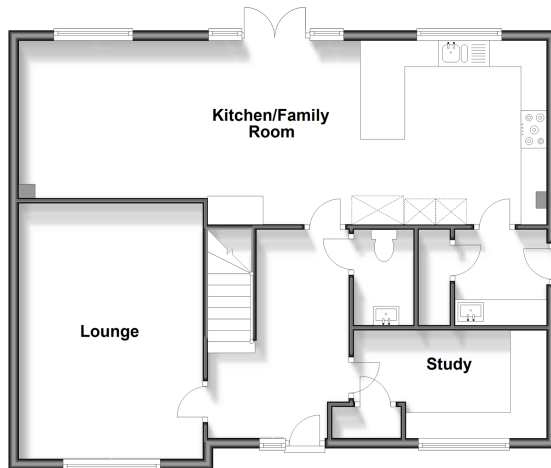
Freehold

5x  3x  2x 

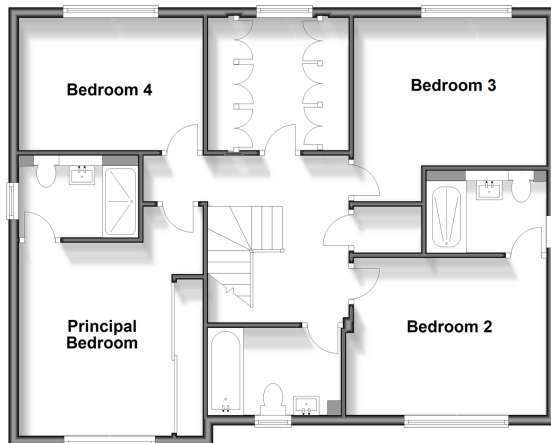
Gransden Road, East Malling, Kent, ME19

Wards
Helping you move forwards

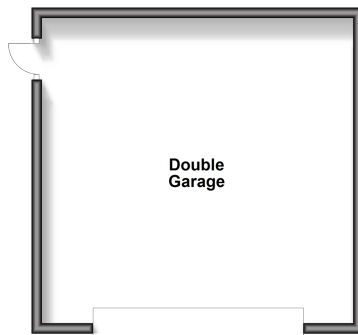
Ground Floor
Approx. 81.4 sq. metres (876.2 sq. feet)



First Floor
Approx. 81.0 sq. metres (872.1 sq. feet)



Outbuilding
Approx. 36.4 sq. metres (392.0 sq. feet)



Accommodation

GROUND FLOOR

Entrance Hall

Cloakroom

Study: 12'0 x 6'8 (3.66m x 2.03m)

Lounge: 16'3 x 11'10 (4.96m x 3.61m)

Kitchen/Family Room: 33'10 (10.32m) x 11'8 (3.56m) narrowing to 10'0 (3.05m)

Utility Room: 6'1 x 5'10 (1.86m x 1.78m)

FIRST FLOOR

Landing

Principal Bedroom: 12'4 x 12'0 (3.76m x 3.66m)

En-Suite Shower Room

Bedroom 2: 12'2 x 10'0 (3.71m x 3.05m)

En-Suite Shower Room

Bedroom 3: 12'1 x 9'5 (3.69m x 2.87m)

Bedroom 4: 11'3 x 8'6 (3.43m x 2.59m)

Bedroom 5/Dressing Room: 11'5 x 8'7 (3.48m x 2.62m)

Bathroom

OUTBUILDING

Double Garage: 20'0 x 19'6 (6.10m x 5.95m)

OUTSIDE

Driveway

Front & Rear Gardens



Main features

- Stunning home built by Dandara - further improved with style & flair
- Sociable kitchen/family room - upgraded & perfect for today's lifestyle & entertaining
- Two en-suite shower rooms adds to the luxurious feel of the this home
- The loft space is boarded offering ample storage
- An electric roller shutter to the double garage & a charging point adds convenience



Nearest Schools

Primary Schools: St James the Great Primary and Nursery School 0.3 miles, Ditton C of E Junior School 0.6 miles, Brookfield Junior School 0.8 miles. Secondary Schools: The Malling School 0.1 miles, Aylesford School 1.2 miles, Grange Park School 1.5 miles



Transport Information

Train Stations: East Malling 0.3 miles, West Malling 1.0 miles, Aylesford 1.2 miles



Address

Gransden Road, East Malling, Kent, ME19



Directions

For directions to this property please contact us.



Wards
Helping you move forwards

Call Larkfield Branch 01732 847877 ■ wardsofkent.co.uk



■ Legal advice should be taken to verify fixtures/fittings, planning, alterations and/or lease details ■ Appliances & services are untested, dimensions are approximate and floor plans are not to scale
■ Through a Homewise Home For Life Plan people aged 60+ can secure this property for up to 59% less, by purchasing a Lifetime Lease.



12935118/20240430/CK/RT