



Guide Price
£145,000

Leasehold

2x  1x  1x 

**Russet Court, Stockett
Lane, Coxheath,
Maidstone, Kent, ME17**

OVER 60?

Secure this property
for up to **59% less!**

Wards
Helping you move forwards



Main features

- Well presented first floor retirement flat for the over 55's
- Bright and airy lounge/diner
- Well kept communal gardens
- Retirement development with on site manager & 24 hour alarm system
- Short walk to Coxheath village centre, with it's array of local shops, amenities and bus stop

Accommodation

FIRST FLOOR

Entrance Hall

Lounge/Diner: 17'10 x 12'1 (5.44m x 3.69m)

Kitchen: 9'1 x 7'4 (2.77m x 2.24m)

Bedroom 1: 11'4 x 9'8 (3.46m x 2.95m)

Bedroom 2: 10'0 x 7'6 (3.05m x 2.29m)

Shower Room: 7'4 x 6'3 (2.24m x 1.91m)

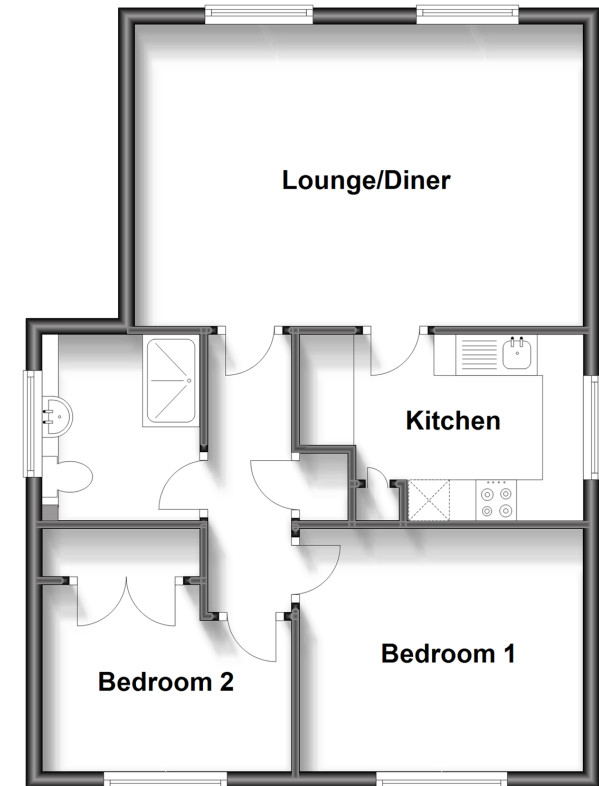
OUTSIDE

Communal Gardens

Communal Car Park

First Floor

Approx. 56.3 sq. metres (606.3 sq. feet)



Call Loose - 01622 744067 ■ wardsofkent.co.uk

- Legal advice should be taken to verify fixtures/fittings, planning, alterations and/or lease details
- Appliances & services are untested, dimensions are approximate and floor plans are not to scale
- Through a Homewise Home For Life Plan people aged 60+ can secure this property for up to 59% less, by purchasing a Lifetime Lease.



13014438/20240103/VMK/VMK