



**Price**  
**£600,000**

**Freehold**

4x  2x  2x 

**Haste Hill Road,  
Boughton Monchelsea,  
Maidstone, Kent, ME17**

**OVER 60?**

Secure this property  
for up to **59% less!**



**Video Tour available**

**Wards**  
Helping you move forwards





## Main features

- **Spacious and well presented family home**
- **Large and flexible accommodation throughout, including a study**
- **Impressive mature, large rear garden with an abundance to flora and fauna**
- **Walking distance to village Post Office shop, primary school and playing field**
- **Surrounding picturesque countryside, perfect for a sunny afternoon walk**

## Accommodation

### GROUND FLOOR

Entrance Hall  
 Shower Room: 9'4 x 2'8 (2.85m x 0.81m)  
 Study: 9'7 x 7'0 (2.92m x 2.14m)  
 Lounge: 25'4 x 11'8 (7.73m x 3.56m)  
 Dining Area: 11'0 x 9'9 (3.36m x 2.97m)  
 Family Area: 10'11 x 9'1 (3.33m x 2.77m)  
 Kitchen: 16'4 x 7'7 (4.98m x 2.31m)

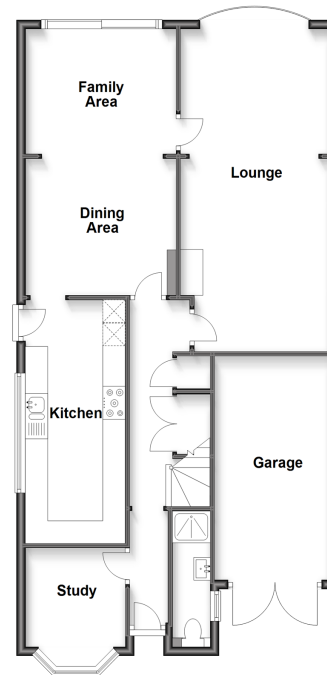
### FIRST FLOOR

Landing  
 Bedroom 1: 13'4 x 9'7 (4.07m x 2.92m)  
 Bedroom 2: 12'2 x 8'6 (3.71m x 2.59m)  
 Bedroom 3: 10'7 x 10'6 (3.23m x 3.20m)  
 Bedroom 4: 9'3 x 6'9 (2.82m x 2.06m)  
 Bathroom: 7'7 x 6'0 (2.31m x 1.83m)

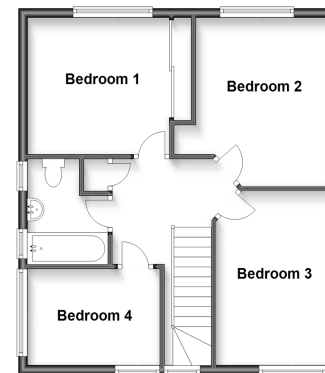
### OUTSIDE

Garage and Driveway  
 Front and Rear Gardens

**Ground Floor**  
 Approx. 88.5 sq. metres (952.9 sq. feet)



**First Floor**  
 Approx. 52.1 sq. metres (560.8 sq. feet)



**Call Loose - 01622 744067 ■ wardsofkent.co.uk**

■ Legal advice should be taken to verify fixtures/fittings, planning, alterations and/or lease details  
 ■ Through a Homewise Home For Life Plan people aged 60+ can secure this property for up to 59% less, by purchasing a Lifetime Lease.

■ Appliances & services are untested, dimensions are approximate and floor plans are not to scale