



Guide Price
£325,000

Freehold

3x  1x  1x 

**Northleigh Close, Loose,
Maidstone, Kent, ME15**

OVER 60?

Secure this property
for up to **59% less!**

Wards
Helping you move forwards



Main features

- Beautifully presented throughout
- Garage en bloc and off road parking
- Thoughtfully extended, modern kitchen/diner, perfect for entertaining
- Short walk to highly sought after Loose Primary School, local shops and the picturesque Loose Valley conservation area
- NO FORWARD CHAIN

Accommodation

GROUND FLOOR

Entrance Porch
Lounge: 13'8 x 10'10 (4.17m x 3.30m)
Kitchen/Diner: 17'7 x 14'1 (5.36m x 4.30m)

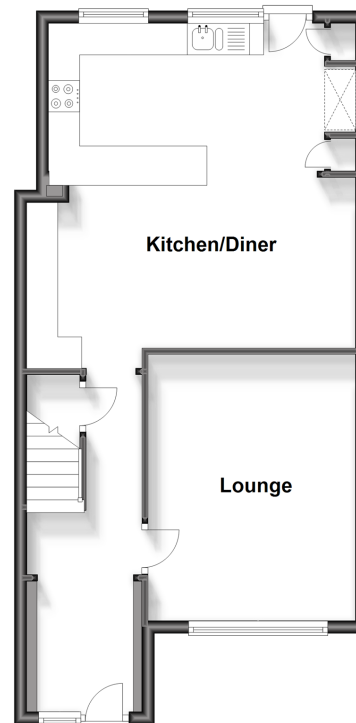
FIRST FLOOR

Landing
Bedroom 1: 12'1 x 9'4 (3.69m x 2.85m)
Bedroom 2: 9'3 x 8'3 (2.82m x 2.52m)
Bedroom 3: 8'8 x 7'7 (2.64m x 2.31m)
Bathroom: 7'6 x 5'5 (2.29m x 1.65m)

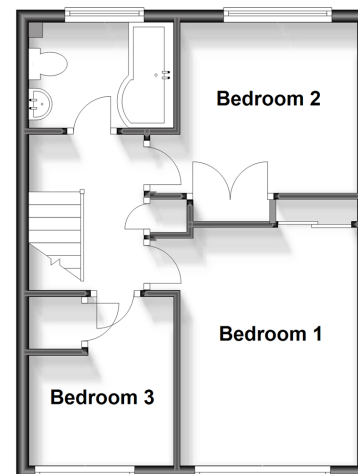
OUTSIDE

Front and Rear Gardens
Garage En Bloc
Off Road Parking
Shed

Ground Floor
Approx. 52.0 sq. metres (559.2 sq. feet)



First Floor
Approx. 37.2 sq. metres (400.6 sq. feet)



Call Loose - 01622 744067 ■ wardsof Kent.co.uk

■ Legal advice should be taken to verify fixtures/fittings, planning, alterations and/or lease details
■ Through a Homewise Home For Life Plan people aged 60+ can secure this property for up to 59% less, by purchasing a Lifetime Lease.

■ Appliances & services are untested, dimensions are approximate and floor plans are not to scale



13015744/20230918/AT/AT