



OVER 60?

Secure this property
for up to **59% less!**

Price

£425,000

Freehold

3x  2x  2x 

**Bensted Close,
Maidstone, Kent, ME15**

Wards
Helping you move forwards



Ground Floor

Approx. 68.0 sq. metres (732.2 sq. feet)

Main features

- Well presented, spacious home in a semi rural village location
- Sociable kitchen/diner with under floor heating and bi fold doors onto the garden, ideal for entertaining
- Well kept and private gardens, with a bespoke partially insulated shed
- Generous room sizes throughout with a versatile layout, home office/snug could also be utilised as a playroom, or a 4th bedroom
- Picturesque views over Kentish countryside, with Hunton Primary School a walk away

Accommodation

GROUND FLOOR

Entrance Hall

Lounge: 18'9 x 11'7 (5.72m x 3.53m)

Home Office/Snug: 12'9 x 7'9 (3.89m x 2.36m)

Kitchen/Diner: 23'7 x 16'9 (7.19m x 5.11m)

Utility Room: 6'3 x 2'4 (1.91m x 0.71m)

Shower Room: 6'3 x 5'3 (1.91m x 1.60m)

FIRST FLOOR

Landing

Bedroom 1: 12'4 x 11'2 (3.76m x 3.41m)

Bedroom 2: 13'1 x 8'9 (3.99m x 2.67m)

Bedroom 3: 11'2 x 6'1 (3.41m x 1.86m)

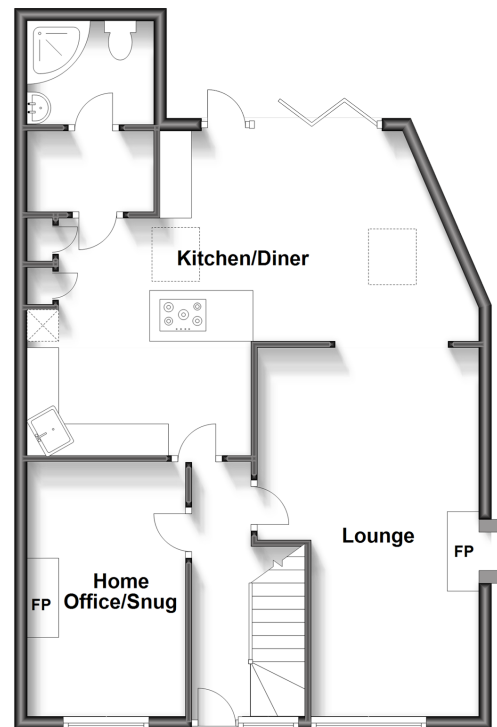
Bathroom: 7'7 x 5'4 (2.31m x 1.63m)

OUTSIDE

Off Road Parking

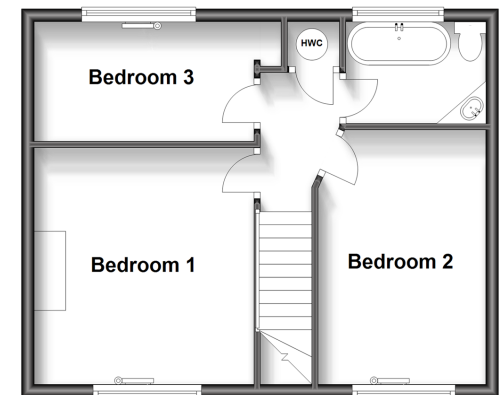
Front and Rear Gardens

Shed: 16'4 x 5'9 (4.98m x 1.75m)



First Floor

Approx. 41.0 sq. metres (441.5 sq. feet)



Call Loose - 01622 744067 ■ wardsofkent.co.uk

- Legal advice should be taken to verify fixtures/fittings, planning, alterations and/or lease details
- Through a Homewise Home For Life Plan people aged 60+ can secure this property for up to 59% less, by purchasing a Lifetime Lease.

- Appliances & services are untested, dimensions are approximate and floor plans are not to scale



13017125/20230802/AS/VMK