



OVER 60?

Secure this property
for up to **59% less!**

Price

£300,000

Freehold

3x  1x  1x 

**Huntington Road,
Coxheath, Maidstone,
Kent, ME17**

Wards
Helping you move forwards



Main features

- Tucked away in a quiet position, overlooking the green
- Good room sizes throughout
- Generous, private rear garden with side access
- Bright and airy lounge and dining area, offering a large sociable space
- Popular village location, short walk to local shops, amenities and Coxheath Primary School

Accommodation

GROUND FLOOR

Entrance Hall
Kitchen: 10'0 x 9'1 (3.05m x 2.77m)
Dining Area: 7'0 x 6'0 (2.14m x 1.83m)
Lounge: 17'1 x 16'0 (5.21m x 4.88m)

FIRST FLOOR

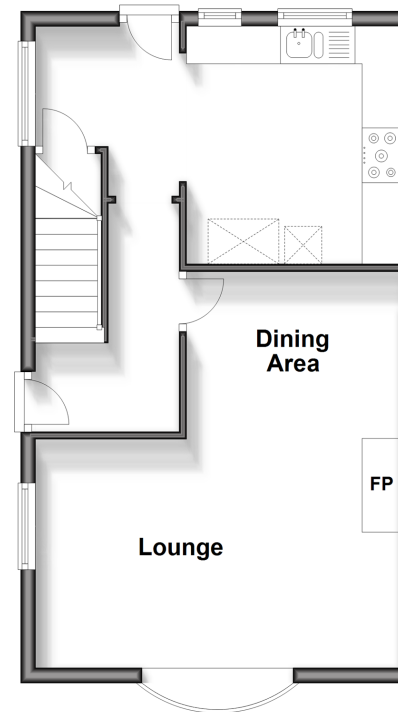
Landing
Bedroom 1: 13'1 x 9'1 (3.99m x 2.77m)
Bedroom 2: 14'0 x 7'0 (4.27m x 2.14m)
Bedroom 3: 10'1 x 8'0 (3.08m x 2.44m)
Bathroom: 8'1 x 5'0 (2.47m x 1.53m)

OUTSIDE

Front and Rear Gardens

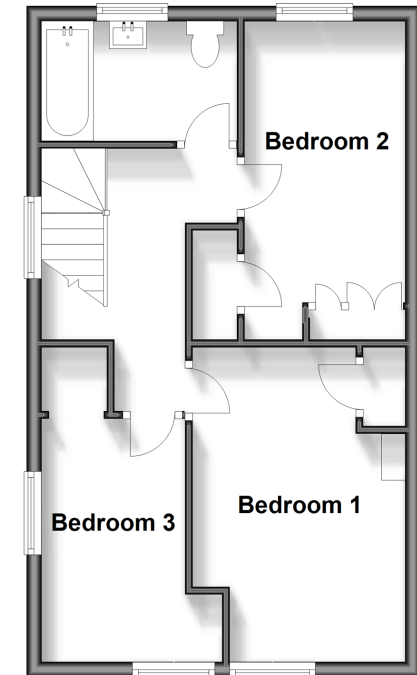
Ground Floor

Approx. 42.1 sq. metres (453.7 sq. feet)



First Floor

Approx. 42.5 sq. metres (457.4 sq. feet)



Call Loose - 01622 744067 ■ wardsof Kent.co.uk

■ Legal advice should be taken to verify fixtures/fittings, planning, alterations and/or lease details
■ Through a Homewise Home For Life Plan people aged 60+ can secure this property for up to 59% less, by purchasing a Lifetime Lease.

■ Appliances & services are untested, dimensions are approximate and floor plans are not to scale



13017275/20240420/AS/VMK