



OVER 60?

Secure this property
for up to **59% less!**

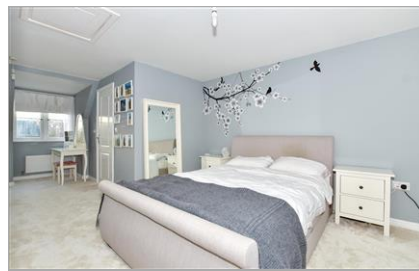
Price
£350,000

Freehold

3x  2x  1x 

**Roman Way, Boughton
Monchelsea, Maidstone,
Kent, ME17**

Wards
Helping you move forwards



Main features

- **Modern family home on a popular development**
- **Off road parking for 2 vehicles**
- **Well presented and private rear garden**
- **Generous size rooms throughout, with bedroom 1 complete with it's own en suite shower room**
- **Short walk to local shops, bus stop and playing field, with scenic countryside nearby**

Accommodation

GROUND FLOOR

Entrance Hall
Downstairs Cloakroom: 6'3 x 3'6 (1.91m x 1.07m)
Kitchen: 10'2 x 8'4 (3.10m x 2.54m)
Lounge/Diner: 18'8 x 13'3 (5.69m x 4.04m)

FIRST FLOOR

Landing
Bedroom 2: 13'2 x 11'3 (4.02m x 3.43m)
Bedroom 3: 13'2 x 10'3 (4.02m x 3.13m)
Bathroom: 9'2 x 6'1 (2.80m x 1.86m)

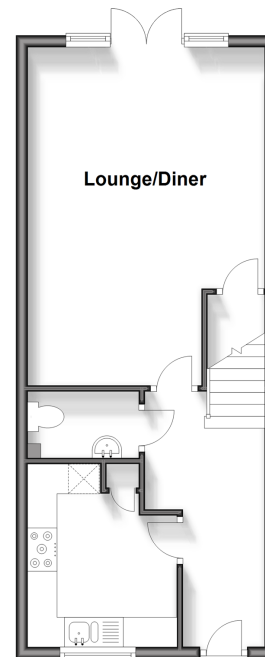
SECOND FLOOR

Bedroom 1: 27'9 x 13'2 (8.46m x 4.02m)
En Suite Shower Room: 7'7 x 4'8 (2.31m x 1.42m)

OUTSIDE

Front and Rear Gardens
Off Road Parking

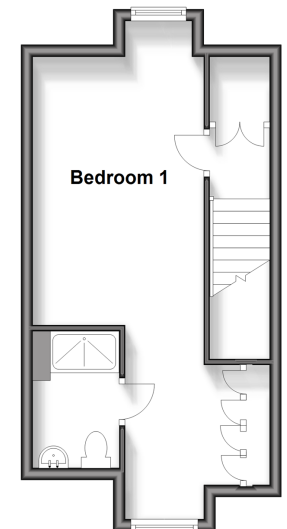
Ground Floor
Approx. 40.8 sq. metres (438.8 sq. feet)



First Floor
Approx. 41.1 sq. metres (442.1 sq. feet)



Second Floor
Approx. 29.3 sq. metres (315.3 sq. feet)



Call Loose - 01622 744067 ■ wardsof Kent.co.uk

■ Legal advice should be taken to verify fixtures/fittings, planning, alterations and/or lease details
■ Through a Homewise Home For Life Plan people aged 60+ can secure this property for up to 59% less, by purchasing a Lifetime Lease.

■ Appliances & services are untested, dimensions are approximate and floor plans are not to scale



13017573/20231213/KIR/VMK