



Price
£725,000

Freehold

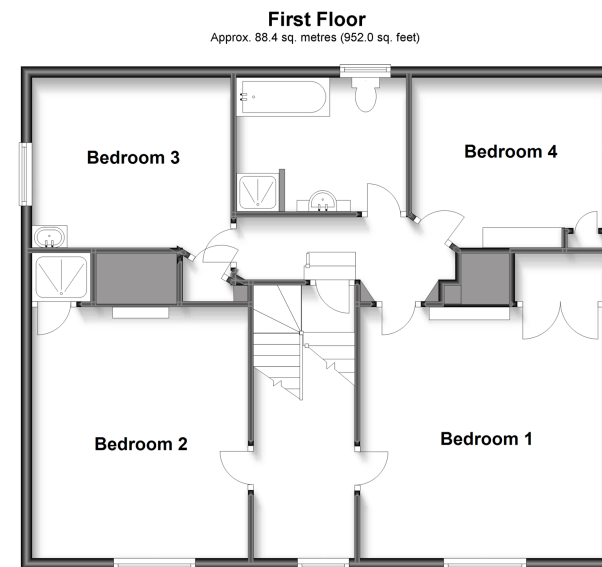
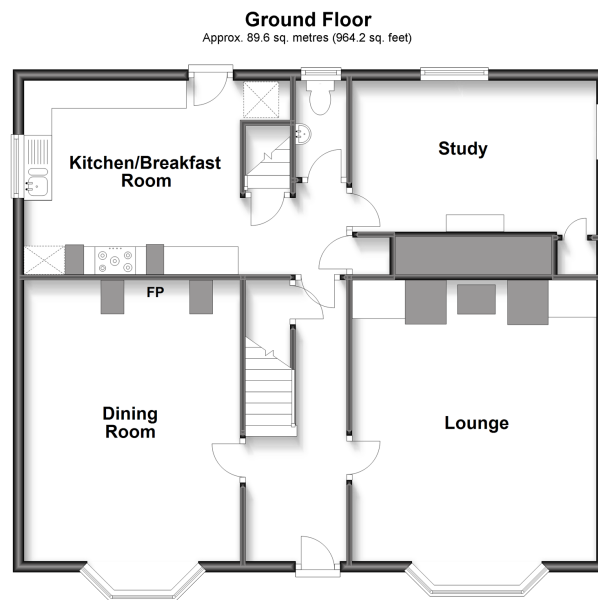
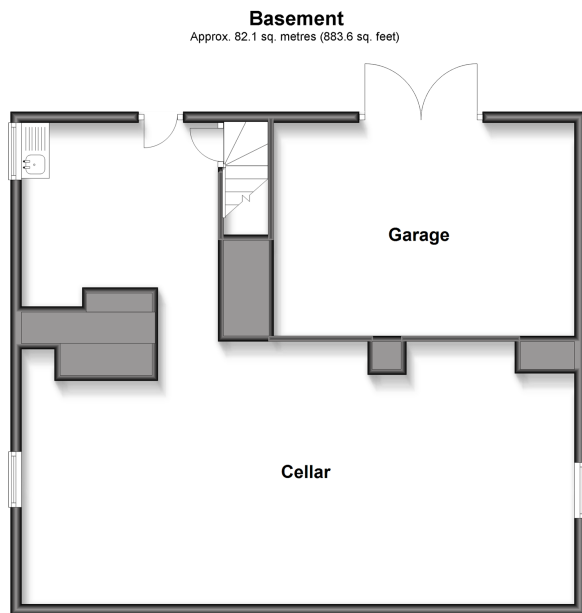
4x  2x  3x 

**Salts Lane, Loose,
Maidstone, Kent, ME15**

OVER 60?

Secure this property
for up to **59% less!**

Wards
Helping you move forwards



Accommodation

GROUND FLOOR

Entrance Hall
Downstairs Cloakroom
Lounge: 19'8 x 14'5 (6.00m x 4.40m)
Dining Room: 19'6 x 12'9 (5.95m x 3.89m)
Study: 13'0 x 9'6 (3.97m x 2.90m)
Kitchen/Breakfast Room: 18'4 x 11'2 (5.59m x 3.41m)

BASEMENT

Cellar: 32'7 x 14'7 (9.94m x 4.45m)
Utility Area: 11'9 x 11'5 (3.58m x 3.48m)

FIRST FLOOR

Landing
Bedroom 1: 17'7 x 14'0 (5.36m x 4.27m)
Bedroom 2: 15'2 x 12'3 (4.63m x 3.74m)
En Suite Shower
Bedroom 3: 11'5 x 11'1 (3.48m x 3.38m)
Bedroom 4: 10'9 x 9'5 (3.28m x 2.87m)
Family Bathroom: 10'0 x 7'6 (3.05m x 2.29m)

OUTSIDE

Garage: 17'5 x 10'9 (5.31m x 3.28m)
Driveway
Front, Side and Rear Gardens



Main features

- Charming Grade II listed character property dating back to 1720
- Stunning wrap around gardens
- Incredibly spacious home, with a wealth of period features throughout
- Set in the picturesque Loose Valley conservation area in the heart of beautiful Loose village
- Walking distance to primary and secondary schools, village pub and Post Office shop



Nearest Schools

Primary Schools: Loose Primary 0.5 miles, Boughton Monchelsea Primary 1.3 miles
Secondary Schools: Cornwallis Academy 0.7 miles, Maidstone Grammar School 2.7 miles, Maidstone Grammar School for Girls 2.7 miles



Transport Information

Train Stations: Maidstone West 3.1 miles, East Farleigh 3.2 miles, Maidstone Barracks 3.4 miles



Address

Salts Lane, Loose, Maidstone, Kent, ME15



Directions

For directions to this property please contact us.



Wards
Helping you move forwards

Call Loose Branch 01622 744067 ■ wardsofkent.co.uk



- The seller is a person connected with Wards as defined in the Estate Agents Act 1979
- Appliances & services are untested, dimensions are approximate and floor plans are not to scale

- Legal advice should be taken to verify fixtures/fittings, planning, alterations and/or lease details
- Through a Homewise Home For Life Plan people aged 60+ can secure this property for up to 59% less, by purchasing a Lifetime Lease.



13017759/20240405/AS/TB