

**OVER 60?**

Secure this property  
for up to **59% less!**



**Price**

**£165,000**

**Leasehold**

1x  1x  1x 

Clock House Rise, Coxheath, Maidstone,  
Kent, ME17

*Wards*  
Helping you move forwards





## Main features

- Modern ground floor apartment
- Popular village location
- Short walk to local shops, amenities and countryside
- Open plan layout, ideal for entertaining
- NO FORWARD CHAIN

## Accommodation

### GROUND FLOOR

Hallway

Lounge: 16'5 x 10'6 (5.01m x 3.20m)

Kitchen/Breakfast Area: 10'5 x 6'9 (3.18m x 2.06m)

Bedroom: 12'5 x 9'10 (3.79m x 3.00m)

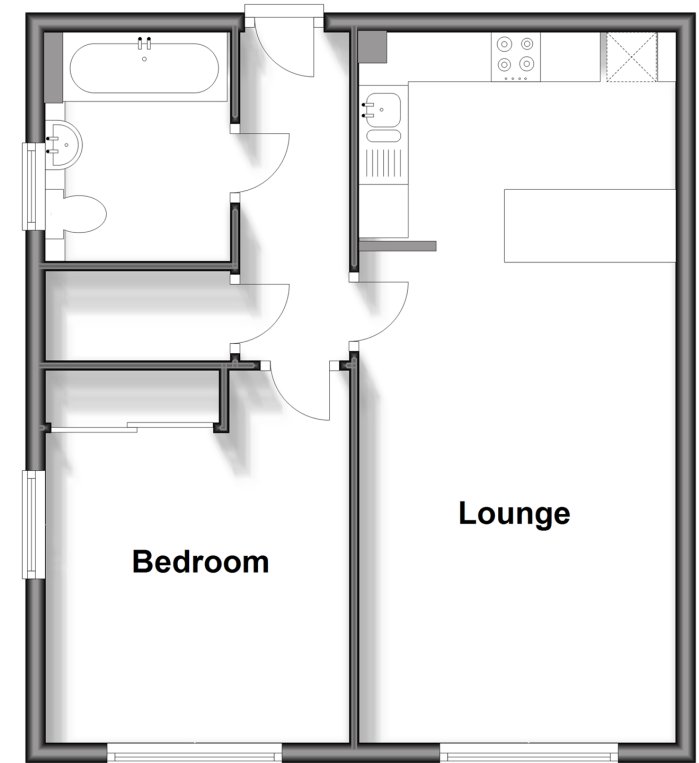
Bathroom: 7'5 x 6'1 (2.26m x 1.86m)

### OUTSIDE

Allocated Parking

## Ground Floor

Approx. 46.0 sq. metres (494.9 sq. feet)



**Call Loose - 01622 744067 ■ [wardsofkent.co.uk](http://wardsofkent.co.uk)**

- Legal advice should be taken to verify fixtures/fittings, planning, alterations and/or lease details
- Appliances & services are untested, dimensions are approximate and floor plans are not to scale
- Through a Homewise Home For Life Plan people aged 60+ can secure this property for up to 59% less, by purchasing a Lifetime Lease.



13017818/20240418/KIR/VMK