

OVER 60?

Secure this property
for up to **59% less!**



Price

£550,000

Freehold

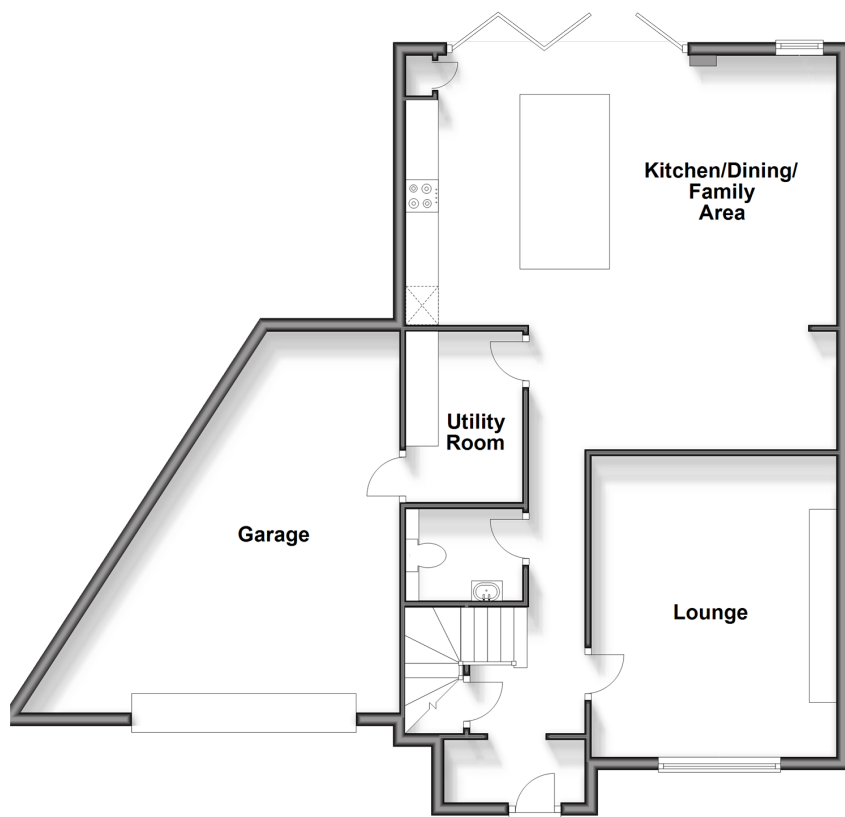
4x  2x  1x 

Culpepper Road, Coxheath, Maidstone,
Kent, ME17

Wards
Helping you move forwards

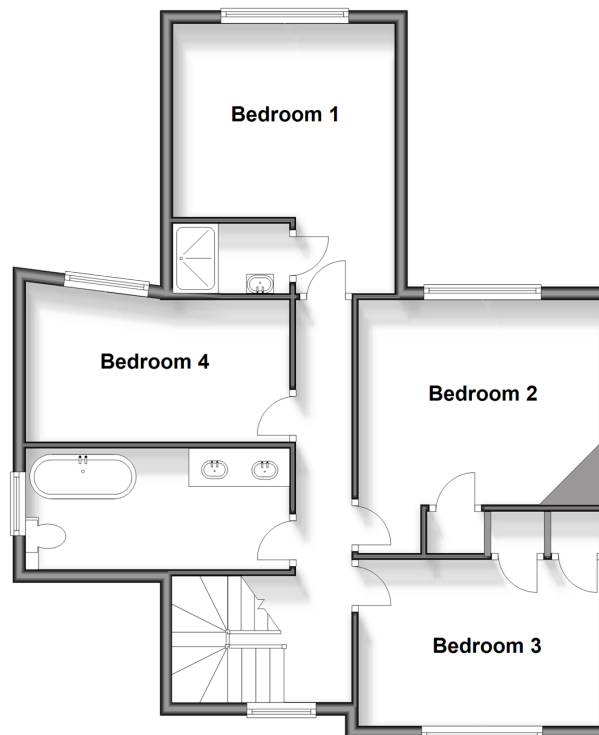
Ground Floor

Approx. 96.2 sq. metres (1035.8 sq. feet)



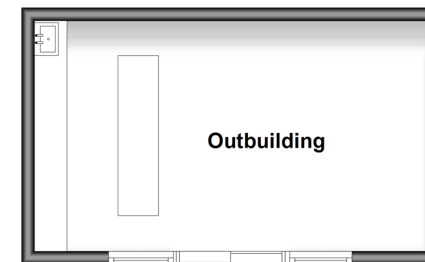
First Floor

Approx. 66.8 sq. metres (719.6 sq. feet)



Outbuilding

Approx. 21.4 sq. metres (230.8 sq. feet)



Accommodation

GROUND FLOOR

Entrance Hall
Downstairs Cloakroom: 5'9 x 4'7 (1.75m x 1.40m)
Lounge: 15'2 x 12'5 (4.63m x 3.79m)
Kitchen/Dining/Family Area: 21'5 x 21'2 (6.53m x 6.46m)
Utility Room: 8'7 x 5'9 (2.62m x 1.75m)

FIRST FLOOR

Landing
Bedroom 1: 14'1 x 11'2 (4.30m x 3.41m)
En Suite Shower Room: 5'8 x 3'9 (1.73m x 1.14m)
Bedroom 2: 12'7 x 12'3 (3.84m x 3.74m)
Bedroom 3: 12'5 x 8'4 (3.79m x 2.54m)
Bedroom 4: 13'3 x 7'1 (4.04m x 2.16m)
Bathroom: 13'2 x 6'1 (4.02m x 1.86m)

OUTBUILDING

Outbuilding: 19'9 x 11'8 (6.02m x 3.56m)

OUTSIDE

Garage and Driveway
Rear Garden



Main features

- Stunning home, renovated to a high standard
- Generous size rooms throughout, bedroom 1 comes complete with an en suite shower room
- Popular village location, short walk to Coxheath Primary School, local shops and amenities
- Beautiful, private and secure garden, with a fully fitted outbuilding, ideal as a home office
- Incredible size kitchen/dining/family area that's sure to become the hub of the home



Nearest Schools

Primary Schools: Coxheath Primary 0.1 miles, East Farleigh Primary 1.0 miles, Loose Primary 1.4 miles
Secondary Schools: Cornwallis Academy 1.2 miles, Oakwood Park Grammar School 2.5 miles, St Augustine Academy 2.5 miles



Transport Information

Train Stations: East Farleigh 2.1 miles, Maidstone West 2.7 miles, Maidstone Barracks 3.1 miles



Address

Culpepper Road, Coxheath, Maidstone, Kent, ME17



Directions

For directions to this property please contact us.



Wards
Helping you move forwards

Call Loose Branch 01622 744067 ■ wardsofkent.co.uk



- The seller is a person connected with Wards as defined in the Estate Agents Act 1979
- Appliances & services are untested, dimensions are approximate and floor plans are not to scale

- Legal advice should be taken to verify fixtures/fittings, planning, alterations and/or lease details
- Through a Homewise Home For Life Plan people aged 60+ can secure this property for up to 59% less, by purchasing a Lifetime Lease.



13018157/20240326/KIR/VMK