



Price
£415,000

Freehold

2x  1x  1x 

**Woodlands, Coxheath,
Maidstone, Kent, ME17**

OVER 60?

Secure this property
for up to **59% less!**

Wards
Helping you move forwards



Main features

- Recently renovated throughout to a high standard
- Beautifully presented kitchen
- Bright and airy lounge/diner overlooking the well presented rear garden
- Quiet cul de sac location in the popular village of Coxheath, just a short walk to local shops, amenities and bus stop
- NO FORWARD CHAIN

Accommodation

GROUND FLOOR

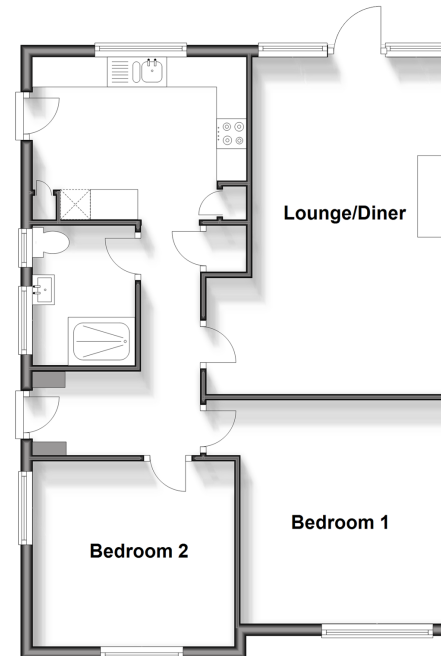
Entrance Hall
 Lounge/Diner: 18'0 x 13'0 (5.49m x 3.97m)
 Kitchen: 12'0 x 8'1 (3.66m x 2.47m)
 Bedroom 1: 13'0 x 12'0 (3.97m x 3.66m)
 Bedroom 2: 11'1 x 10'0 (3.38m x 3.05m)
 Shower Room: 7'1 x 5'1 (2.16m x 1.55m)

OUTSIDE

Garage and Driveway
 Front and Rear Gardens

Ground Floor

Approx. 67.2 sq. metres (723.1 sq. feet)



Call Loose - 01622 744067 ■ wardsofkent.co.uk

■ Legal advice should be taken to verify fixtures/fittings, planning, alterations and/or lease details
 ■ Through a Homewise Home For Life Plan people aged 60+ can secure this property for up to 59% less, by purchasing a Lifetime Lease.

■ Appliances & services are untested, dimensions are approximate and floor plans are not to scale