



Price
£162,500

Leasehold

3x  1x  1x 

**Morris Close, Boughton
Monchelsea, Maidstone,
Kent, ME17**

Wards
Helping you move forwards



Main features

- 50% share of shared ownership
- Modern, well kept and ready to move into, with a spacious lounge/diner
- Private and secure garden
- Ideal first time buy, with this rarely available 50% shared ownership
- Located on a modern development, short walk to local shops, schools amenities and bus stop

Accommodation

GROUND FLOOR

Entrance Hall
 Downstairs Cloakroom: 4'1 x 3'1 (1.25m x 0.94m)
 Kitchen: 8'1 x 7'0 (2.47m x 2.14m)
 Lounge/Diner: 15'0 x 14'1 (4.58m x 4.30m)

FIRST FLOOR

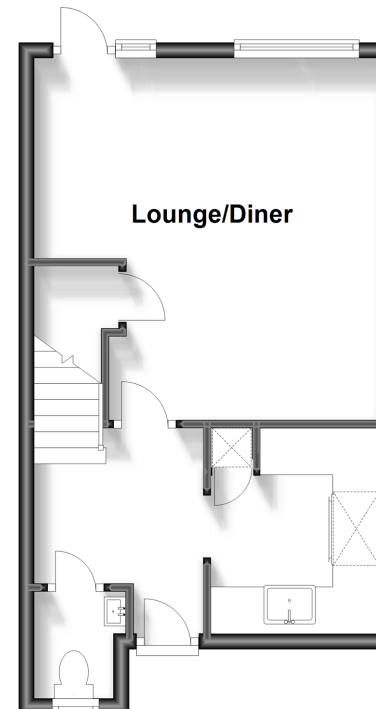
Landing
 Bedroom 1: 14'0 x 8'0 (4.27m x 2.44m)
 Bedroom 2: 12'0 x 8'0 (3.66m x 2.44m)
 Bedroom 3: 8'1 x 7'0 (2.47m x 2.14m)
 Bathroom: 6'0 x 5'1 (1.83m x 1.55m)

OUTSIDE

Off Road Parking
 Front and Rear Gardens

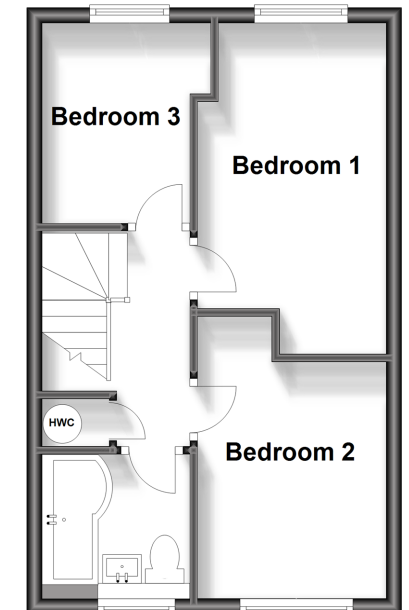
Ground Floor

Approx. 33.9 sq. metres (364.6 sq. feet)



First Floor

Approx. 33.0 sq. metres (355.4 sq. feet)



Call Loose - 01622 744067 ■ wardsof Kent.co.uk

■ Legal advice should be taken to verify fixtures/fittings, planning, alterations and/or lease details

■ Appliances & services are untested, dimensions are approximate and floor plans are not to scale



13019260/20231023/KIR/VMK