



Guide Price
£400,000

Freehold

2x  1x  1x 

**Amsbury Road,
Coxheath, Maidstone,
Kent, ME17**

OVER 60?

Secure this property
for up to **59% less!**

Wards
Helping you move forwards



Main features

- **Generous size home in a popular village location**
- **Large lounge coupled with a lovely conservatory (used as a dining room) leading to the secure rear garden**
- **Private and low maintenance rear garden**
- **Spacious, modern kitchen/breakfast room offering a sociable space to entertain in**
- **Short walk to Coxheath village centre with its' local shops, amenities and bus stop, with scenic countryside nearby**

Accommodation

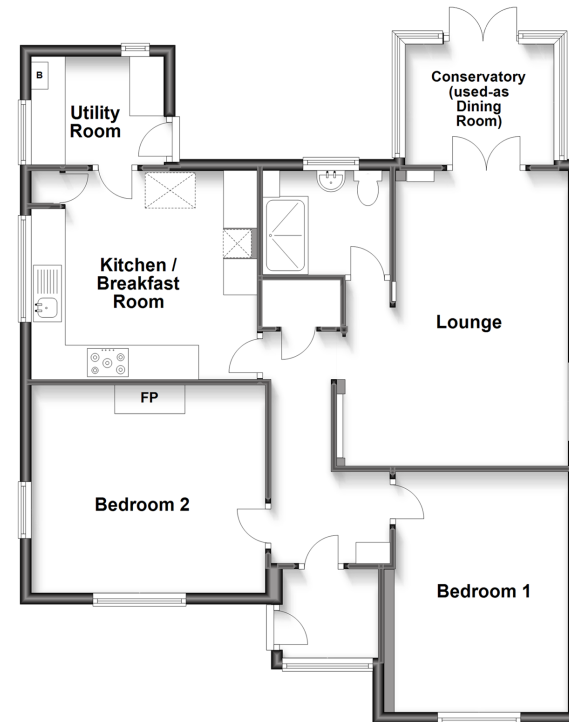
GROUND FLOOR

Entrance Porch
Hallway
Lounge: 17'2 x 13'5 (5.24m x 4.09m)
Kitchen/Kitchen Breakfast Room: 13'2 x 12'2 (4.02m x 3.71m)
Utility Room: 7'9 x 6'4 (2.36m x 1.93m)
Conservatory (Dining Room): 9'8 x 7'7 (2.95m x 2.31m)
Bedroom 1: 13'10 x 10'1 (4.22m x 3.08m)
Bedroom 2: 13'6 x 11'10 (4.12m x 3.61m)
Shower Room: 7'3 x 5'8 (2.21m x 1.73m)

OUTSIDE

Driveway
Front and Rear Gardens

Ground Floor
Approx. 90.5 sq. metres (974.1 sq. feet)



Call Loose - 01622 744067 ■ wardsof Kent.co.uk

■ Legal advice should be taken to verify fixtures/fittings, planning, alterations and/or lease details
■ Through a Homewise Home For Life Plan people aged 60+ can secure this property for up to 59% less, by purchasing a Lifetime Lease.

■ Appliances & services are untested, dimensions are approximate and floor plans are not to scale