



OVER 60?

Secure this property
for up to **59% less!**

Price
£650,000

Freehold

4x  3x  1x 

**Linton Road, Loose,
Maidstone, Kent, ME15**

Wards
Helping you move forwards



Main features

- Well presented and thoughtfully extended 1920's family home, with an abundance of space
- Sociable, open plan kitchen/diner and family area, ideal for entertaining
- Luxurious bedroom 1, complete with an en suite shower room, dressing area and Juliet balcony
- Superb outbuilding with a bar (entertaining area), office and cloakroom, which could become an annexe subject to planning and consents
- Sought after Loose Primary School catchment area

Accommodation

GROUND FLOOR

Entrance Hall
Lounge: 13'1 x 13'0 (3.99m x 3.97m)
Kitchen/Diner: 24'1 x 21'1 (7.35m x 6.43m)
Family Area: 11'1 x 10'0 (3.38m x 3.05m)
Utility Room: 7'0 x 4'1 (2.14m x 1.25m)
Shower Room: 8'0 x 8'0 (2.44m x 2.44m)

FIRST FLOOR

Landing
Bedroom 1: 20'0 x 10'1 (6.10m x 3.08m)
Juliet Balcony
Dressing Area
En Suite Shower Room: 7'1 x 4'1 (2.16m x 1.25m)
Bedroom 2: 12'1 x 12'0 (3.69m x 3.66m)
Bedroom 3: 12'1 x 7'1 (3.69m x 2.16m)
Bedroom 4: 8'1 x 8'0 (2.47m x 2.44m)
Bathroom: 8'1 x 8'0 (2.47m x 2.44m)

OUTBUILDING

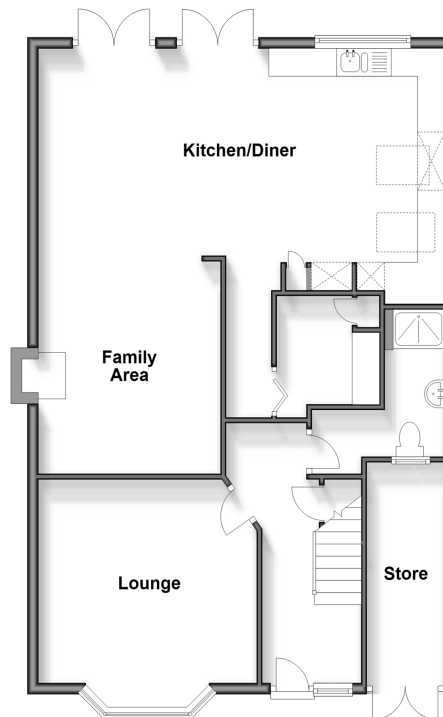
Outbuilding Bar: 28'0 x 14'1 (8.54m x 4.30m)
Outbuilding Office: 9'1 x 9'1 (2.77m x 2.77m)
Outbuilding Cloakroom: 5'0 x 3'0 (1.53m x 0.92m)

OUTSIDE

Off Road Parking
Store
Rear Garden

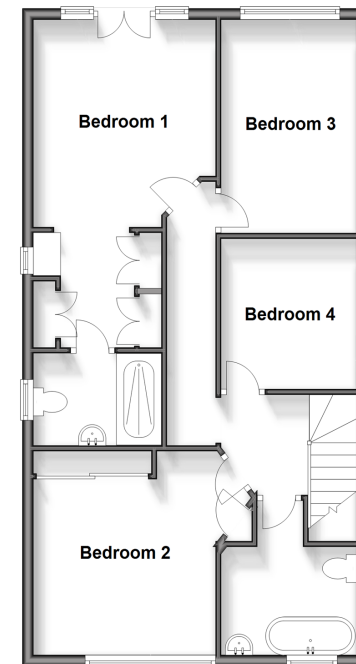
Ground Floor

Approx. 84.8 sq. metres (912.5 sq. feet)



First Floor

Approx. 67.1 sq. metres (722.1 sq. feet)



Call Loose - 01622 744067 ■ wardsofKent.co.uk

- Legal advice should be taken to verify fixtures/fittings, planning, alterations and/or lease details
- Through a Homewise Home For Life Plan people aged 60+ can secure this property for up to 59% less, by purchasing a Lifetime Lease.

■ Appliances & services are untested, dimensions are approximate and floor plans are not to scale



13020016/20240411/KIR/VMK