



OVER 60?

Secure this property
for up to **59% less!**

Price

£450,000

Freehold

3x  1x  1x 

**Cobtree Road,
Coxheath, Maidstone,
Kent, ME17**

Wards
Helping you move forwards



Main features

- Beautifully presented and ready to move straight into
- Spacious lounge leading to a lovely conservatory
- Stunning, sunny rear garden
- Bespoke, recently re fitted kitchen finished to a very high standard
- Popular location within Coxheath Village with it's amenities all nearby

Accommodation

GROUND FLOOR

Entrance Porch

Hallway

Kitchen: 10'0 x 8'1 (3.05m x 2.47m)

Lounge: 18'0 x 12'0 (5.49m x 3.66m)

Conservatory: 19'0 x 19'0 (5.80m x 5.80m)

Bedroom 1: 14'0 x 8'1 (4.27m x 2.47m)

Bedroom 2: 14'0 x 9'0 (4.27m x 2.75m)

Bedroom 3: 11'0 x 6'0 (3.36m x 1.83m)

Shower Room: 5'0 x 5'0 (1.53m x 1.53m)

Separate Toilet: 5'0 x 2'0 (1.53m x 0.61m)

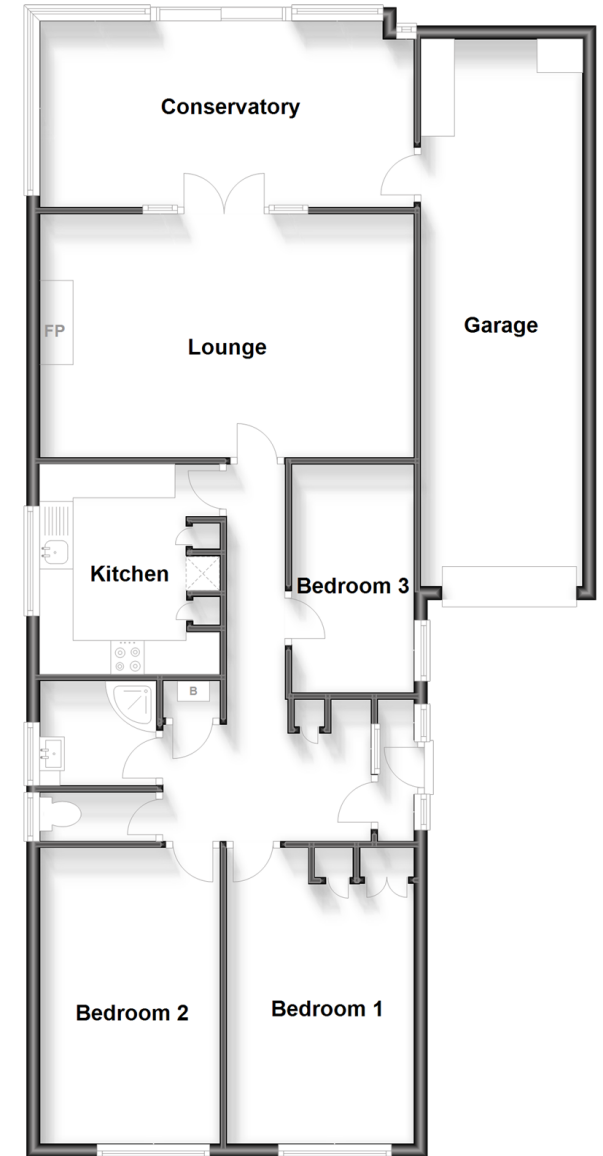
OUTSIDE

Garage and Driveway

Front and Rear Gardens

Ground Floor

Approx. 113.7 sq. metres (1223.6 sq. feet)



Call Loose - 01622 744067 ■ wardsofken.co.uk

- Legal advice should be taken to verify fixtures/fittings, planning, alterations and/or lease details
- Appliances & services are untested, dimensions are approximate and floor plans are not to scale
- Through a Homewise Home For Life Plan people aged 60+ can secure this property for up to 59% less, by purchasing a Lifetime Lease.



13020051/20231018/KIR/VMK