

OVER 60?

Secure this property
for up to **59% less!**

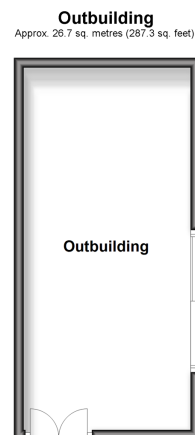
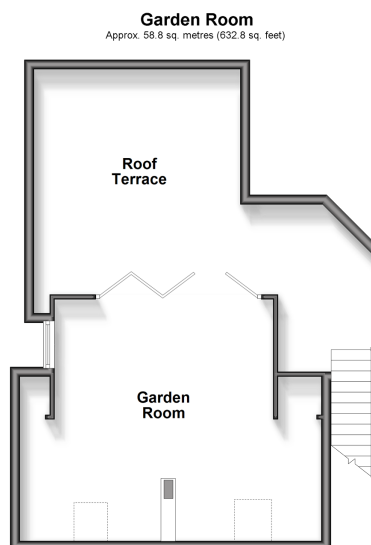
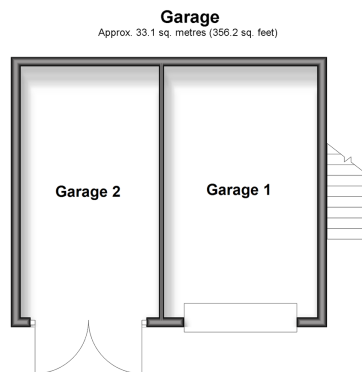
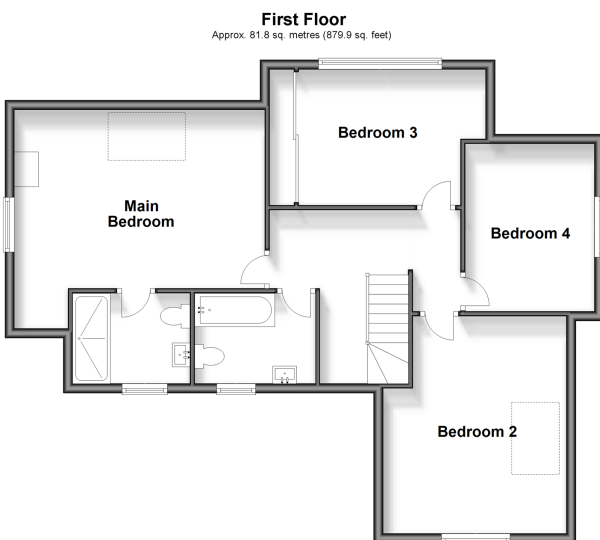
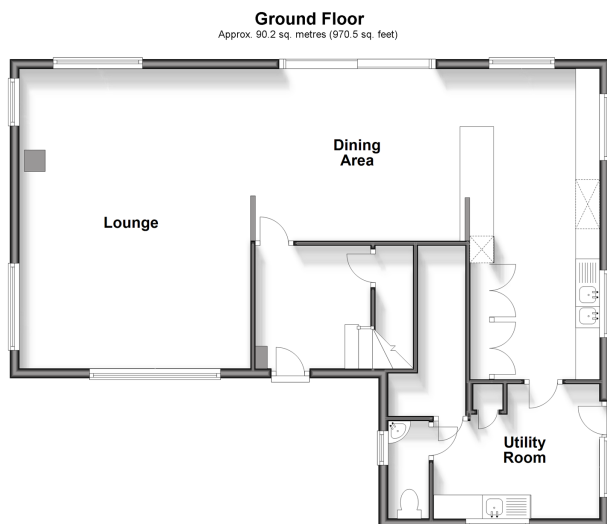


Guide Price
£1,000,000
Freehold

4x  2x  1x 

Linton Hill, Linton, Maidstone, Kent, ME17

Wards
Helping you move forwards



Accommodation

GROUND FLOOR

Entrance Hall

Lounge: 21'0 x 15'1 (6.41m x 4.60m)

Dining Area: 14'0 x 11'1 (4.27m x 3.38m)

Kitchen: 12'0 x 9'0 (3.66m x 2.75m)

Utility Room: 11'1 x 9'0 (3.38m x 2.75m)

Downstairs Cloakroom: 6'0 x 2'1 (1.83m x 0.64m)

FIRST FLOOR

Landing

Main Bedroom: 17'0 x 11'1 (5.19m x 3.38m)

En Suite Shower Room: 8'0 x 6'1 (2.44m x 1.86m)

Bedroom 2: 14'1 x 12'0 (4.30m x 3.66m)

Bedroom 3: 12'1 x 9'1 (3.69m x 2.77m)

Bedroom 4: 12'0 x 8'1 (3.66m x 2.47m)

Bathroom: 8'0 x 5'1 (2.44m x 1.55m)

GARAGE

Garage 1: 17'5 x 10'1 (5.31m x 3.08m)

Garage 2: 17'1 x 8'7 (5.21m x 2.62m)

GARDEN ROOM

Garden Room: 20'7 x 16'6 (6.28m x 5.03m)

Roof Terrace

OUTBUILDING

Outbuilding: 24'1 x 11'6 (7.35m x 3.51m)

OUTSIDE

Front, Side and Rear Gardens

Driveway



Main features

- Contemporary, bright and airy home finished to an extremely high standard throughout
- Spacious, and sociable, open plan living space
- Amazing patio area, elevated garden room & roof terrace, with stunning and far reaching views
- Planning permission granted for a dormer window in the main bedroom, with outstanding views
- Picturesque semi rural location, yet just a short drive to local shops and amenities



Nearest Schools

Primary Schools: Boughton Monchelsea Primary 1.5 miles, Coxheath Primary 1.7 miles, Loose Primary 2.2 miles
Secondary Schools: Cornwallis Academy 1.4 miles, Sutton Valence School 3.5 miles, Maidstone Grammar School 3.8 miles



Transport Information

Train Stations: Marden 2.6 miles, Staplehurst 3.2 miles, East Farleigh 3.8 miles



Address

Linton Hill, Linton, Maidstone, Kent, ME17



Directions

For directions to this property please contact us.



Wards
Helping you move forwards

Call Loose Branch 01622 744067 ■ wardsofkent.co.uk



■ Legal advice should be taken to verify fixtures/fittings, planning, alterations and/or lease details ■ Appliances & services are untested, dimensions are approximate and floor plans are not to scale
■ Through a Homewise Home For Life Plan people aged 60+ can secure this property for up to 59% less, by purchasing a Lifetime Lease.



13021233/20240411/KIR/VMK