

OVER 60?

Secure this property
for up to **59% less!**



Price
£275,000
Freehold

2x  1x  1x 

Alchins Cottages, Heath Road, Linton,
Maidstone, Kent, ME17

Wards
Helping you move forwards



Main features

- Charming character cottage in a popular village location
- Useful cellar with the potential to utilise as a home office, or gym
- Stunning and extremely generous size rear garden
- Bright and airy kitchen and dining area, offering a sociable space perfect for entertaining
- Walking distance to Coxheath village centre with it's local shops and amenities, yet with scenic countryside all around

Accommodation

GROUND FLOOR

Lounge: 11'5 x 11'4 (3.48m x 3.46m)
Dining Area: 11'5 x 9'5 (3.48m x 2.87m)
Kitchen: 9'8 x 8'3 (2.95m x 2.52m)

BASEMENT

Cellar: 10'9 x 9'4 (3.28m x 2.85m)

FIRST FLOOR

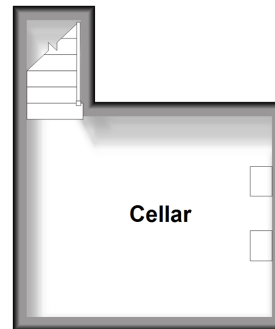
Landing
Bedroom 1: 11'4 x 11'4 (3.46m x 3.46m)
Bedroom 2: 8'3 x 8'2 (2.52m x 2.49m)
Bathroom: 8'10 x 5'6 (2.69m x 1.68m)

OUTSIDE

Off Road Parking
Rear Garden

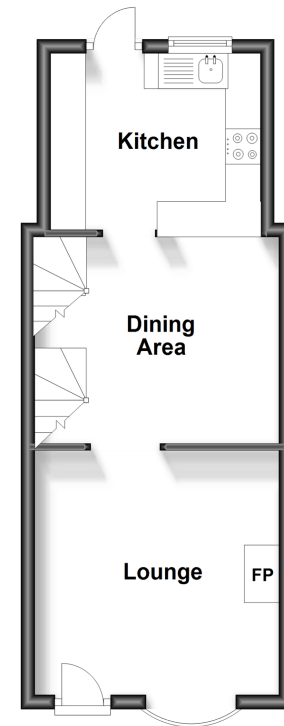
Basement

Approx. 11.0 sq. metres (118.5 sq. feet)



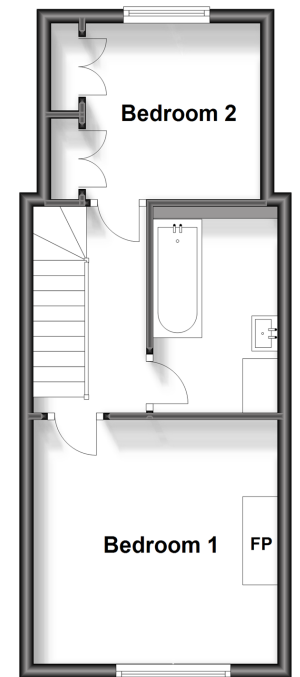
Ground Floor

Approx. 30.7 sq. metres (330.7 sq. feet)



First Floor

Approx. 30.5 sq. metres (328.8 sq. feet)



Call Loose - 01622 744067 ■ wardsofkent.co.uk

- The seller is a person connected with Wards as defined in the Estate Agents Act 1979
- Appliances & services are untested, dimensions are approximate and floor plans are not to scale

- Legal advice should be taken to verify fixtures/fittings, planning, alterations and/or lease details
- Through a Homewise Home For Life Plan people aged 60+ can secure this property for up to 59% less, by purchasing a Lifetime Lease.

