



Guide Price
£475,000

Freehold

4x  2x  2x 

**Wakehurst Close,
Coxheath, Maidstone,
Kent, ME17**

OVER 60?

Secure this property
for up to **59% less!**

Wards
Helping you move forwards



Main features

- **Bright and airy lounge with feature fireplace**
- **Well presented private and secure rear garden**
- **Generous size rooms throughout with bedroom 1 benefiting from an en-suite shower room**
- **Modern kitchen/breakfast room offering a sociable space for entertaining with a separate dining room for more formal occasions**
- **Located on a small development in the popular village of Coxheath within walking distance of the village centre**

Accommodation

GROUND FLOOR

Entrance Hall

Downstairs Cloakroom: 6'11 x 3'4 (2.11m x 1.02m)

Lounge: 16'9 x 14'9 (5.11m x 4.50m)

Dining Room: 13'3 x 12'4 (4.04m x 3.76m)

Kitchen/Breakfast Room: 19'0 x 8'1 (5.80m x 2.47m)

FIRST FLOOR

Landing

Bedroom 1: 13'5 x 12'8 (4.09m x 3.86m)

En Suite Shower Room: 6'3 x 6'2 (1.91m x 1.88m)

Bedroom 2: 22'1 x 8'3 (6.74m x 2.52m)

Bedroom 3: 11'1 x 10'5 (3.38m x 3.18m)

Bedroom 4: 10'6 x 6'9 (3.20m x 2.06m)

Bathroom: 7'6 x 6'6 (2.29m x 1.98m)

OUTSIDE

Garage: 17'5 x 8'3 (5.31m x 2.52m)

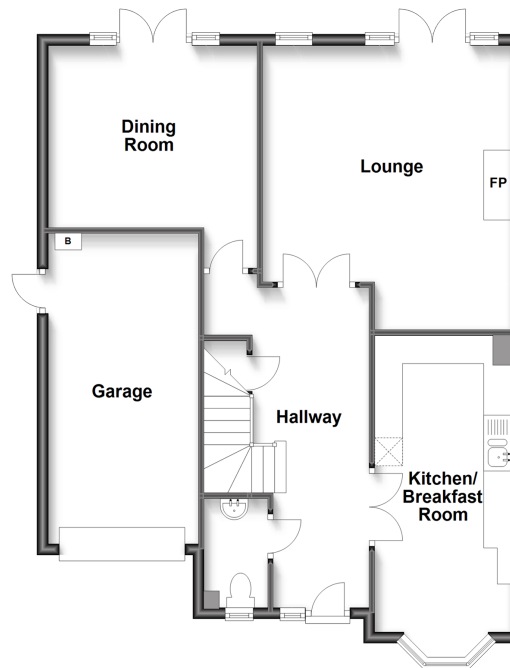
Driveway

Front and Rear Gardens

Summer House

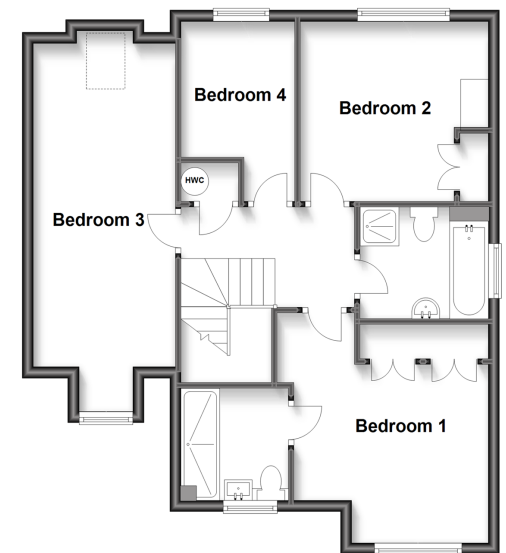
Ground Floor

Approx. 82.1 sq. metres (883.7 sq. feet)



First Floor

Approx. 65.8 sq. metres (707.9 sq. feet)



Call Loose - 01622 744067 ■ wardsofkent.co.uk

- Legal advice should be taken to verify fixtures/fittings, planning, alterations and/or lease details
- Through a Homewise Home For Life Plan people aged 60+ can secure this property for up to 59% less, by purchasing a Lifetime Lease.

- Appliances & services are untested, dimensions are approximate and floor plans are not to scale



13021555/20231129/VMK/VMK