



OVER 60?

Secure this property
for up to **59% less!**

Price

£255,000

Freehold

2x  1x  1x 

Alchins Cottages, Heath Road, Linton,
Maidstone, Kent, ME17

Wards
Helping you move forwards



Main features

- Charming character cottage with period features
- Useful cellar for storage
- Off road parking
- Extremely generous size rear garden, backing onto fields and offering scenic views
- Walking distance to Coxheath village centre, with it's shops, amenities and schools

Accommodation

GROUND FLOOR

Lounge: 11'6 x 11'1 (3.51m x 3.38m)
 Kitchen: 11'3 x 9'4 (3.43m x 2.85m)
 Rear Lobby
 Bathroom: 6'2 x 5'0 (1.88m x 1.53m)

BASEMENT

Cellar

FIRST FLOOR

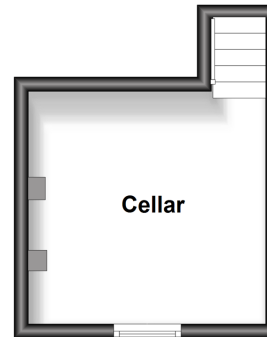
Landing
 Bedroom 1: 12'3 x 11'6 (3.74m x 3.51m)
 Bedroom 2: 10'10 x 9'5 (3.30m x 2.87m)

OUTSIDE

Off Road Parking
 Rear Garden

Cellar

Approx. 11.7 sq. metres (125.4 sq. feet)



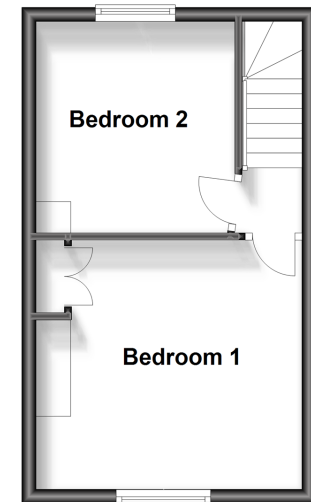
Ground Floor

Approx. 27.5 sq. metres (295.7 sq. feet)



First Floor

Approx. 24.5 sq. metres (264.1 sq. feet)



Call Loose - 01622 744067 ■ wardsofkent.co.uk

- Legal advice should be taken to verify fixtures/fittings, planning, alterations and/or lease details
- Through a Homewise Home For Life Plan people aged 60+ can secure this property for up to 59% less, by purchasing a Lifetime Lease.

- Appliances & services are untested, dimensions are approximate and floor plans are not to scale



13021633/20231011/AT/AT