



OVER 60?

Secure this property
for up to **59% less!**

Price

£450,000

Freehold

3x  2x  1x 

**Leonard Gould Way,
Loose, Maidstone, Kent,
ME15**

Wards
Helping you move forwards



Main features

- Well presented, spacious home on a popular modern development
- Bright and airy lounge/diner, perfect for relaxing in the evenings
- Modern kitchen/breakfast room, a great sociable space
- Lovely conservatory leading to the private garden, overlooking fields with great views
- Popular location, just a short walk to sought after Loose Primary School, local shops and the picturesque Loose Valley conservation area

Accommodation

GROUND FLOOR

Entrance Hall
Downstairs Cloakroom: 5'1 x 2'1 (1.55m x 0.64m)
Kitchen/Breakfast Room: 11'1 x 9'1 (3.38m x 2.77m)
Lounge/Diner: 19'1 x 17'0 (5.82m x 5.19m)
Conservatory: 17'1 x 11'1 (5.21m x 3.38m)

FIRST FLOOR

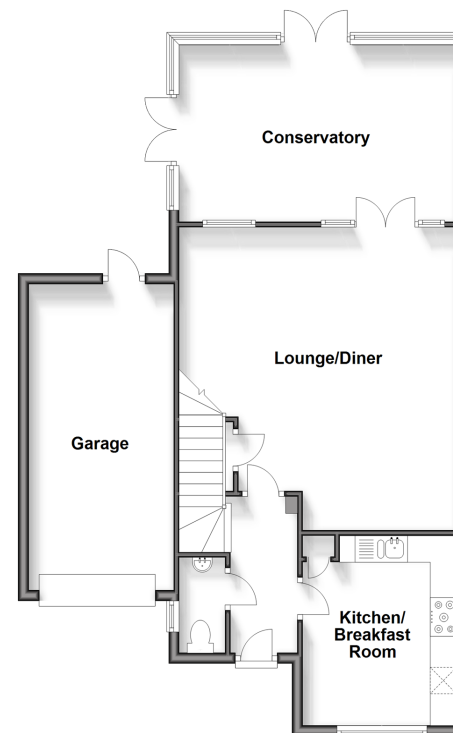
Landing
Bedroom 1: 14'0 x 9'1 (4.27m x 2.77m)
En suite Shower Room: 7'0 x 6'1 (2.14m x 1.86m)
Bedroom 2: 12'0 x 10'0 (3.66m x 3.05m)
Bedroom 3: 8'1 x 8'1 (2.47m x 2.47m)
Bathroom: 7'0 x 5'1 (2.14m x 1.55m)

OUTSIDE

Garage and Driveway
Front and Rear Gardens

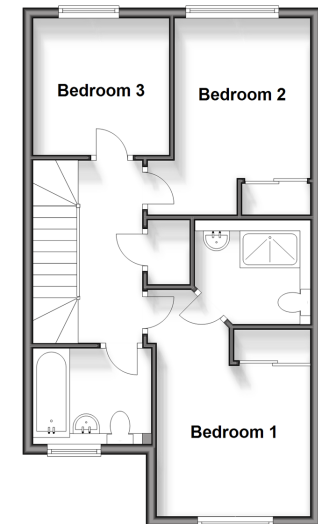
Ground Floor

Approx. 81.3 sq. metres (875.0 sq. feet)



First Floor

Approx. 46.6 sq. metres (501.1 sq. feet)



Call Loose - 01622 744067 ■ wardsofkent.co.uk

- Legal advice should be taken to verify fixtures/fittings, planning, alterations and/or lease details
- Through a Homewise Home For Life Plan people aged 60+ can secure this property for up to 59% less, by purchasing a Lifetime Lease.

- Appliances & services are untested, dimensions are approximate and floor plans are not to scale



13021656/20240130/KIR/VMK