

**OVER 60?**

Secure this property  
for up to **59% less!**



**Guide Price**

**£850,000**

**Freehold**

5x  3x  3x 

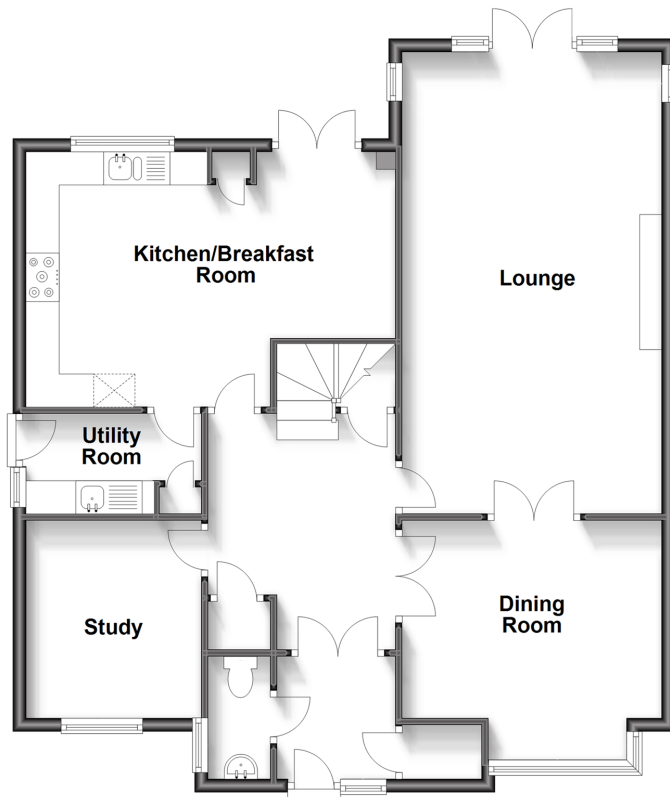
Dean Street, East Farleigh, Maidstone,  
Kent, ME15

*Wards*  
Helping you move forwards



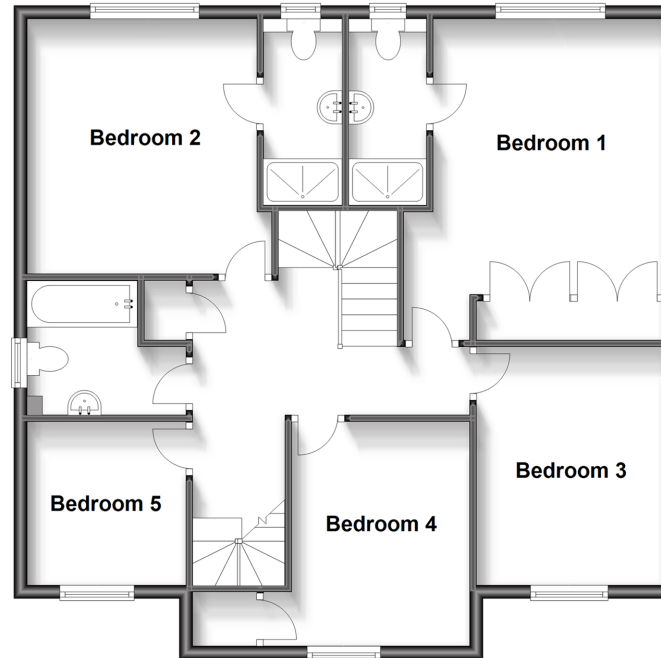
## Ground Floor

Approx. 92.8 sq. metres (999.2 sq. feet)



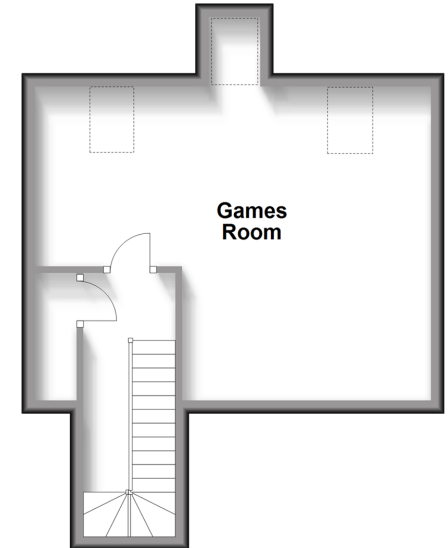
## First Floor

Approx. 87.5 sq. metres (941.6 sq. feet)



## Second Floor

Approx. 31.9 sq. metres (342.9 sq. feet)



## Accommodation

### GROUND FLOOR

Entrance Hall  
Downstairs Cloakroom: 6'0 x 3'0 (1.83m x 0.92m)  
Study: 9'0 x 8'1 (2.75m x 2.47m)  
Dining Room: 12'1 x 11'1 (3.69m x 3.38m)  
Lounge: 22'1 x 12'1 (6.74m x 3.69m)  
Kitchen/Breakfast Room: 18'1 x 12'1 (5.52m x 3.69m)  
Utility Room: 9'0 x 5'0 (2.75m x 1.53m)

### FIRST FLOOR

Landing  
Bedroom 1: 16'0 x 13'0 (4.88m x 3.97m)  
En Suite Shower Room 1: 9'0 x 3'1 (2.75m x 0.94m)  
Bedroom 2: 12'1 x 12'1 (3.69m x 3.69m)  
En Suite Shower Room 2: 9'0 x 3'1 (2.75m x 0.94m)  
Bedroom 3: 11'0 x 10'0 (3.36m x 3.05m)  
Bedroom 4: 11'1 x 9'1 (3.38m x 2.77m)  
Bedroom 5: 8'0 x 8'0 (2.44m x 2.44m)  
Bathroom: 8'0 x 7'0 (2.44m x 2.14m)

### SECOND FLOOR

Landing  
Games Room: 19'1 x 15'1 (5.82m x 4.60m)

### OUTSIDE

Double Garage and Driveway  
Front and Rear Gardens  
Shed



## Main features

- Immaculately presented, modern executive home
- Spacious, gated driveway with detached double garage
- Generous accommodation over 3 floors, with useful games room on the second floor
- Stunning, mature, secure and private rear garden on a generous size plot
- Sought after semi rural village location, with shops and amenities in the neighbouring village



### Nearest Schools

Primary Schools: Coxheath Primary 0.8 miles, East Farleigh Primary 1.9 miles, Hunton C of E Primary 2.0 miles  
Secondary Schools: Cornwallis Academy 2.0 miles, Maidstone Grammar School 2.7 miles



### Transport Information

Train Stations: East Farleigh 2.6 miles, Maidstone West 3.4 miles, Maidstone Barracks 3.7 miles, Watlington 3.7 miles



### Address

Dean Street, East Farleigh, Maidstone, Kent, ME15



### Directions

For directions to this property please contact us.





**Wards**  
Helping you move forwards

Call Loose Branch 01622 744067 ■ [wardsofkent.co.uk](http://wardsofkent.co.uk)



■ Legal advice should be taken to verify fixtures/fittings, planning, alterations and/or lease details ■ Appliances & services are untested, dimensions are approximate and floor plans are not to scale  
■ Through a Homewise Home For Life Plan people aged 60+ can secure this property for up to 59% less, by purchasing a Lifetime Lease.



13021660/20230719/VMK/VMK