

**OVER 60?**

Secure this property  
for up to **59% less!**



**Guide Price**  
**£800,000**  
**Freehold**

4x  2x  3x 

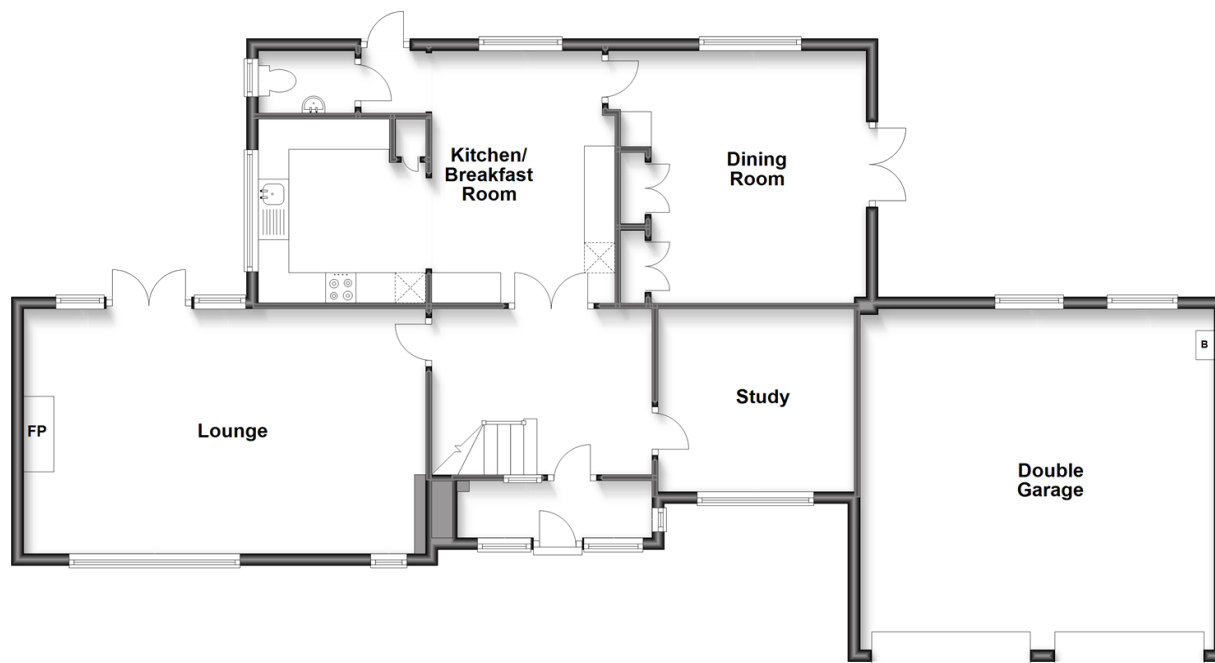
Vicarage Lane, East Farleigh, Maidstone,  
Kent, ME15

*Wards*  
Helping you move forwards



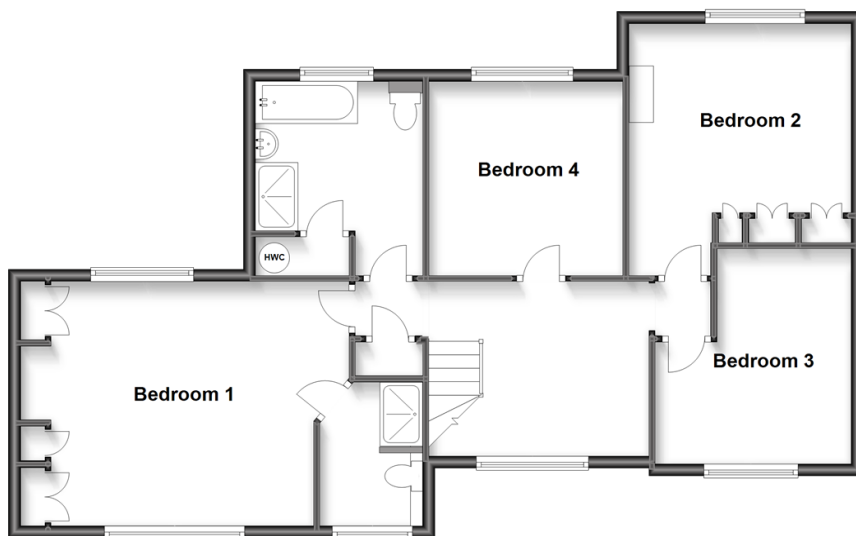
## Ground Floor

Approx. 126.6 sq. metres (1362.6 sq. feet)



## First Floor

Approx. 83.5 sq. metres (898.4 sq. feet)



## Accommodation

### GROUND FLOOR

Entrance Porch

Hallway

Lounge: 21'7 x 13'3 (6.58m x 4.04m)

Study: 10'5 x 9'9 (3.18m x 2.97m)

Dining Room: 13'5 x 12'10 (4.09m x 3.91m)

Kitchen/Breakfast Room: 19'9 x 13'5 (6.02m x 4.09m)

Downstairs Cloakroom: 4'8 x 2'6 (1.42m x 0.76m)

### FIRST FLOOR

Landing

Bedroom 1: 17'9 x 13'9 (5.41m x 4.19m)

En Suite Shower Room: 8'6 x 7'4 (2.59m x 2.24m)

Bedroom 2: 13'9 x 12'1 (4.19m x 3.69m)

Bedroom 3: 12'3 x 10'7 (3.74m x 3.23m)

Bedroom 4: 10'6 x 10'5 (3.20m x 3.18m)

Bathroom: 10'7 x 9'4 (3.23m x 2.85m)

### OUTSIDE

Double Garage and Driveway

Front and Rear Gardens

Summer House



## Main features

- Spacious and flexible family home in a sought after semi rural village location
- Generous size study, ideal for home working
- Bright and airy kitchen/breakfast room, sure to become the hub of the home
- Beautiful countryside views, near to East Farleigh Primary School and mainline train station, with direct links into London
- NO FORWARD CHAIN



### Nearest Schools

Primary Schools: East Farleigh Primary 0.2 miles, Barming Primary 1.9 miles, West Borough Primary 1.9 miles  
Secondary Schools: Oakwood Park Grammar School 2.2 miles, St Augustine Academy 2.3 miles, St Simon Stock Catholic School 2.5 miles



### Transport Information

Train Stations: East Farleigh 1.3 miles, Barming 2.7 miles, Maidstone West 3.1 miles



### Address

Vicarage Lane, East Farleigh, Maidstone, Kent, ME15



### Directions

For directions to this property please contact us.





**Wards**  
Helping you move forwards

Call Loose Branch 01622 744067 ■ [wardsofkent.co.uk](http://wardsofkent.co.uk)



■ Legal advice should be taken to verify fixtures/fittings, planning, alterations and/or lease details ■ Appliances & services are untested, dimensions are approximate and floor plans are not to scale  
■ Through a Homewise Home For Life Plan people aged 60+ can secure this property for up to 59% less, by purchasing a Lifetime Lease.



13021704/20230512/AT/VMK