



Guide Price
£900,000

Freehold

3x  2x  1x 

**Hunt Street, West
Farleigh, Maidstone,
Kent, ME15**

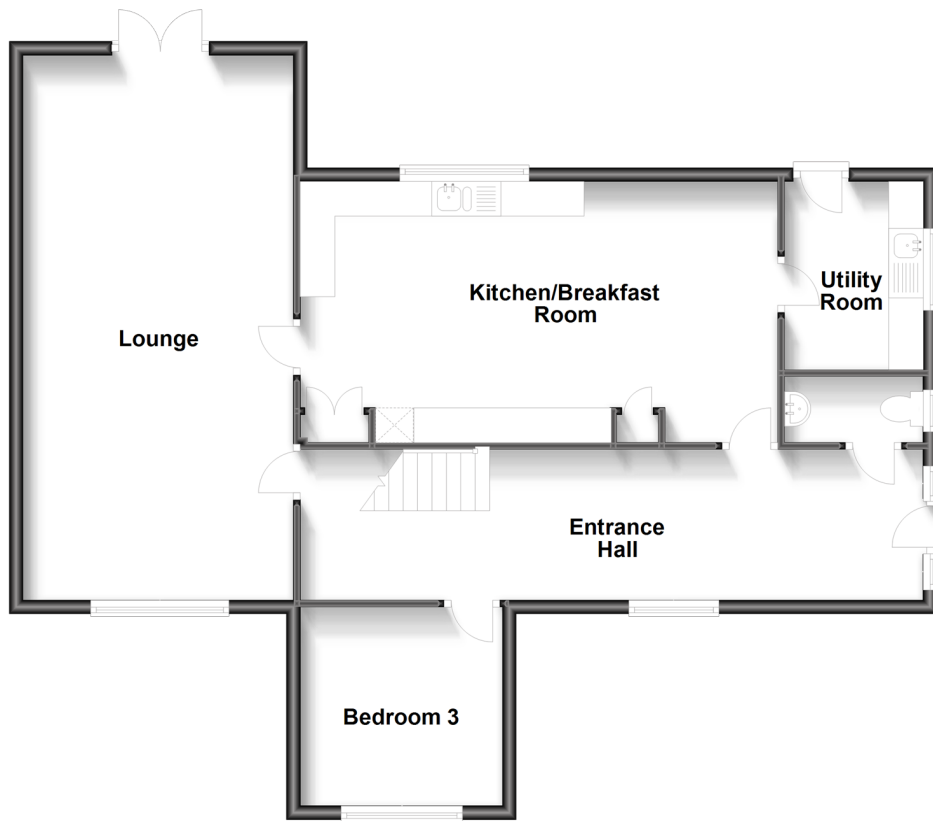
OVER 60?

Secure this property
for up to **59% less!**

Wards
Helping you move forwards

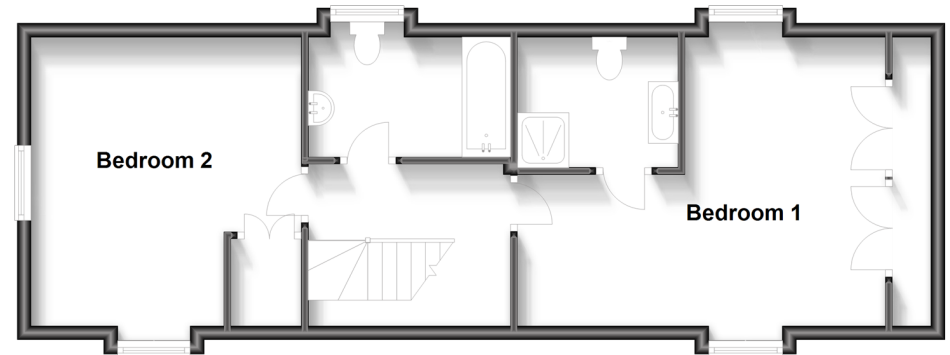
Ground Floor

Approx. 94.1 sq. metres (1012.6 sq. feet)



First Floor

Approx. 54.6 sq. metres (588.1 sq. feet)



Accommodation

GROUND FLOOR

Entrance Hall

Downstairs Cloakroom: 6'4 x 3'1 (1.93m x 0.94m)

Lounge: 25'7 x 12'8 (7.80m x 3.86m)

Kitchen/Breakfast Room: 22'7 x 12'3 (6.89m x 3.74m)

Utility Room: 9'3 x 6'4 (2.82m x 1.93m)

Bedroom 3: 9'6 x 9'4 (2.90m x 2.85m)

FIRST FLOOR

Landing

Bedroom 1: 17'4 x 13'9 (5.29m x 4.19m)

En Suite Shower Room: 7'6 x 5'10 (2.29m x 1.78m)

Bedroom 2: 14'5 x 12'9 (4.40m x 3.89m)

Bathroom: 9'0 x 6'4 (2.75m x 1.93m)

OUTSIDE

Off Road Parking

Front, Side and Rear Gardens

Dutch Barn

Wooden Chalet



Main features

- Semi rural location, with potential for development, subject to planning & consents
- Large and spacious rooms throughout
- Perfect for those looking for country living
- Generous plot of 2.16 acres
- Dutch barn with lapsed planning permission to change usage to a dwelling & additional wooden chalet with lawful development certificate as a single dwelling house



Nearest Schools

Primary Schools: Watlingbury C of E Primary 0.7 miles, Yalding, St Peter and St Paul C of E Voluntary Controlled Primary Sch 1.2 miles, Hunton C of E Primary 2.0 miles
Secondary Schools: The Malling School 3.2 miles, Oakwood Park Grammar School 3.2 miles



Transport Information

Train Stations: Watlingbury 0.9 miles, Yalding 1.4 miles, East Farleigh 2.4 miles



Address

Hunt Street, West Farleigh, Maidstone, Kent, ME15



Directions

For directions to this property please contact us.



Wards
Helping you move forwards

Call Loose Branch 01622 744067 ■ wardsofkent.co.uk



■ Legal advice should be taken to verify fixtures/fittings, planning, alterations and/or lease details ■ Appliances & services are untested, dimensions are approximate and floor plans are not to scale
■ Through a Homewise Home For Life Plan people aged 60+ can secure this property for up to 59% less, by purchasing a Lifetime Lease.



13021728/20231018/KIR/VMK