



**Guide Price**  
**£570,000**

**Freehold**

4x  2x  2x 

**Loose Road, Maidstone,  
Kent, ME15**

**OVER 60?**

Secure this property  
for up to **59% less!**

*Wards*  
Helping you move forwards





## Main features

- Fully refurbished, spacious home that's ready to move into
- Modern kitchen/breakfast room, a sociable space ideal for entertaining
- Useful ground floor study, currently utilised as a beauty therapy room
- Generous room sizes throughout, bedroom 1 benefiting from a luxurious en suite shower room
- Short walk to highly sought after Loose Primary School, local shops and the picturesque Loose Valley conservation area

## Accommodation

### GROUND FLOOR

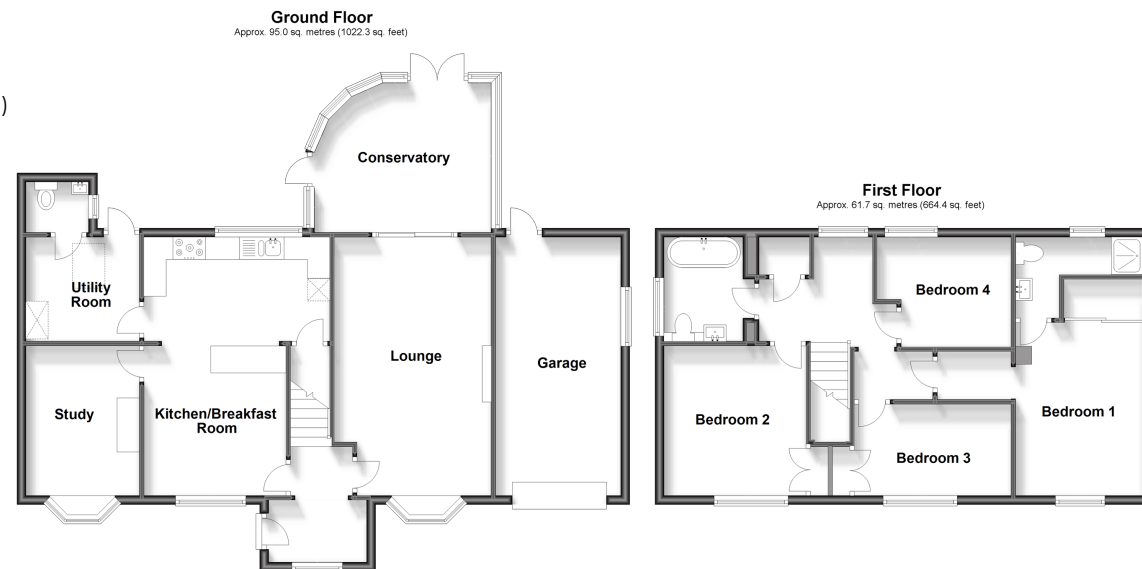
Entrance Porch  
Hallway  
Study: 11'2 x 8'4 (3.41m x 2.54m)  
Lounge: 18'10 x 11'5 (5.74m x 3.48m)  
Conservatory: 13'10 x 12'0 (4.22m x 3.66m)  
Kitchen/Breakfast Room: 19'2 x 13'10 (5.85m x 4.22m)  
Utility Room: 8'4 x 8'1 (2.54m x 2.47m)  
Downstairs Cloakroom: 4'5 x 3'6 (1.35m x 1.07m)

### FIRST FLOOR

Landing  
Bedroom 1: 15'2 x 12'6 (4.63m x 3.81m)  
En Suite Shower Room: 9'3 x 6'0 (2.82m x 1.83m)  
Bedroom 2: 11'1 x 10'5 (3.38m x 3.18m)  
Bedroom 3: 9'6 x 8'3 (2.90m x 2.52m)  
Bedroom 4: 11'7 x 6'7 (3.53m x 2.01m)  
Bathroom: 7'5 x 5'9 (2.26m x 1.75m)

### OUTSIDE

Garage and Driveway  
Rear Garden



**Call Loose - 01622 744067 ■ [wardsofkent.co.uk](http://wardsofkent.co.uk)**

■ Legal advice should be taken to verify fixtures/fittings, planning, alterations and/or lease details  
■ Through a Homewise Home For Life Plan people aged 60+ can secure this property for up to 59% less, by purchasing a Lifetime Lease.

■ Appliances & services are untested, dimensions are approximate and floor plans are not to scale



13021730/20230918/VMK/VMK