



OVER 60?

Secure this property
for up to **59% less!**

Price

£300,000

Freehold

2x  1x  1x 

**Loose Road, Maidstone,
Kent, ME15**

Wards
Helping you move forwards



Main features

- Immaculately presented home in a convenient location
- Useful cellar, offering storage space with the potential to convert to a useable room
- Summer house with electrics, currently used as a home office
- Beautifully presented and extended kitchen/diner with the 'wow factor'
- Popular Loose location, short walk to the picturesque village, highly sought after Loose Primary School and local shops

Accommodation

GROUND FLOOR

Entrance Hall
Lounge: 11'0 x 10'10 (3.36m x 3.30m)
Kitchen/Diner: 21'7 x 11'6 (6.58m x 3.51m)
Downstairs Cloakroom: 3'9 x 3'6 (1.14m x 1.07m)

BASEMENT

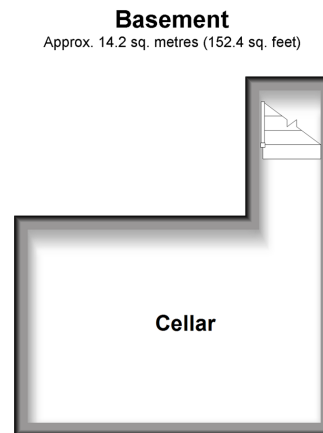
Cellar: 14'8 x 10'5 (4.47m x 3.18m)

FIRST FLOOR

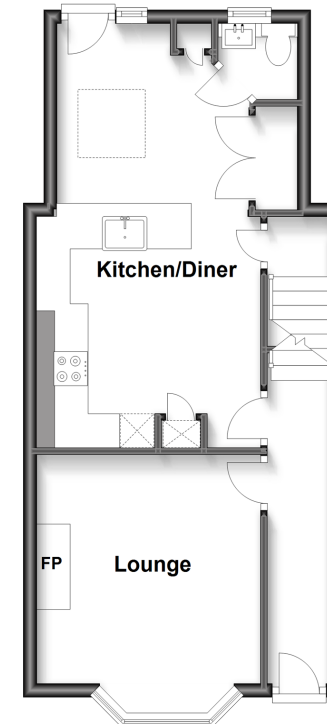
Landing
Bedroom 1: 14'5 x 11'3 (4.40m x 3.43m)
Bedroom 2: 11'2 x 8'4 (3.41m x 2.54m)
Bathroom: 9'1 x 5'5 (2.77m x 1.65m)

OUTSIDE

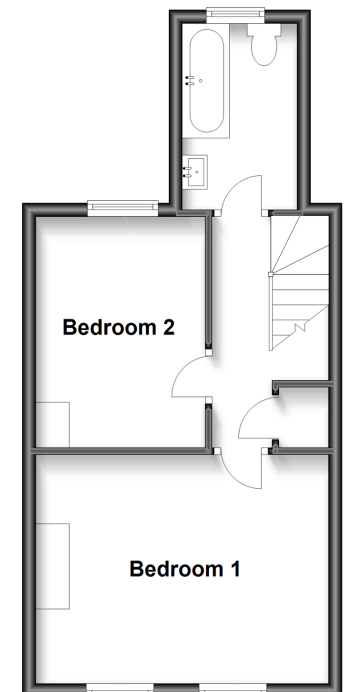
Front and Rear Gardens
Summer House



Ground Floor
Approx. 40.1 sq. metres (432.1 sq. feet)



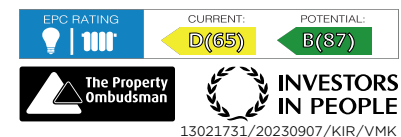
First Floor
Approx. 34.6 sq. metres (372.3 sq. feet)



Call Loose - 01622 744067 ■ wardsofkent.co.uk

■ Legal advice should be taken to verify fixtures/fittings, planning, alterations and/or lease details
■ Through a Homewise Home For Life Plan people aged 60+ can secure this property for up to 59% less, by purchasing a Lifetime Lease.

■ Appliances & services are untested, dimensions are approximate and floor plans are not to scale



13021731/20230907/KIR/VMK