



Price
£700,000

Freehold

4x  2x  2x 

**Kirkdale Road,
Maidstone, Kent, ME15**

OVER 60?

Secure this property
for up to **59% less!**

Wards
Helping you move forwards



Main features

- Unique and versatile home in a sought after and quiet location
- Useful ground floor study, ideal for those who work from home
- Modern kitchen/breakfast room with useful utility room
- Mature and private rear garden, perfect for relaxing in the summer months
- On the doorstep of the picturesque Loose Valley conservation area and OFSTED rated 'outstanding' Loose Primary School

Accommodation

GROUND FLOOR

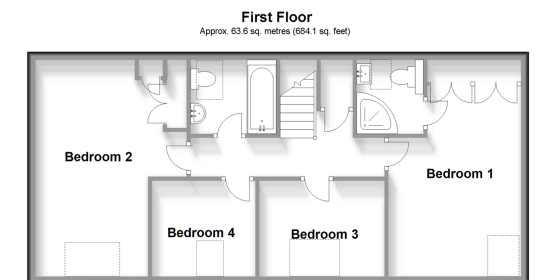
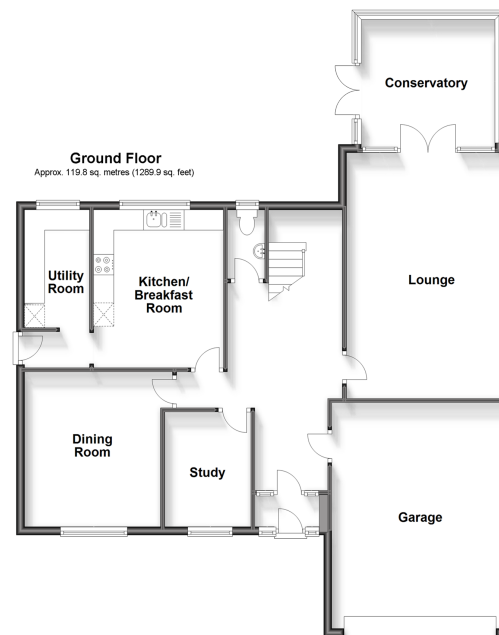
Entrance Porch
Hallway
Downstairs Cloakroom: 5'7 x 3'0 (1.70m x 0.92m)
Lounge: 20'5 x 13'0 (6.23m x 3.97m)
Conservatory: 11'9 x 10'7 (3.58m x 3.23m)
Study: 9'1 x 6'10 (2.77m x 2.08m)
Dining Room: 12'4 x 11'7 (3.76m x 3.53m)
Kitchen/Breakfast Room: 17'6 x 10'5 (5.34m x 3.18m)
Utility Room: 9'5 x 5'3 (2.87m x 1.60m)

FIRST FLOOR

Landing
Bedroom 1: 15'3 x 10'4 (4.65m x 3.15m)
En Suite Shower Room: 5'6 x 4'9 (1.68m x 1.45m)
Bedroom 2: 17'3 x 12'6 (5.26m x 3.81m)
Bedroom 3: 10'3 x 7'6 (3.13m x 2.29m)
Bedroom 4: 8'4 x 7'6 (2.54m x 2.29m)
Bathroom: 6'9 x 5'7 (2.06m x 1.70m)

OUTSIDE

Double Garage and Driveway
Front and Rear Gardens



Call Loose - 01622 744067 ■ wardsofKent.co.uk

- Legal advice should be taken to verify fixtures/fittings, planning, alterations and/or lease details
- Through a Homewise Home For Life Plan people aged 60+ can secure this property for up to 59% less, by purchasing a Lifetime Lease.

- Appliances & services are untested, dimensions are approximate and floor plans are not to scale