



Price
£700,000

Freehold

4x  2x  3x 

**Pear Tree Lane, Loose,
Maidstone, Kent, ME15**

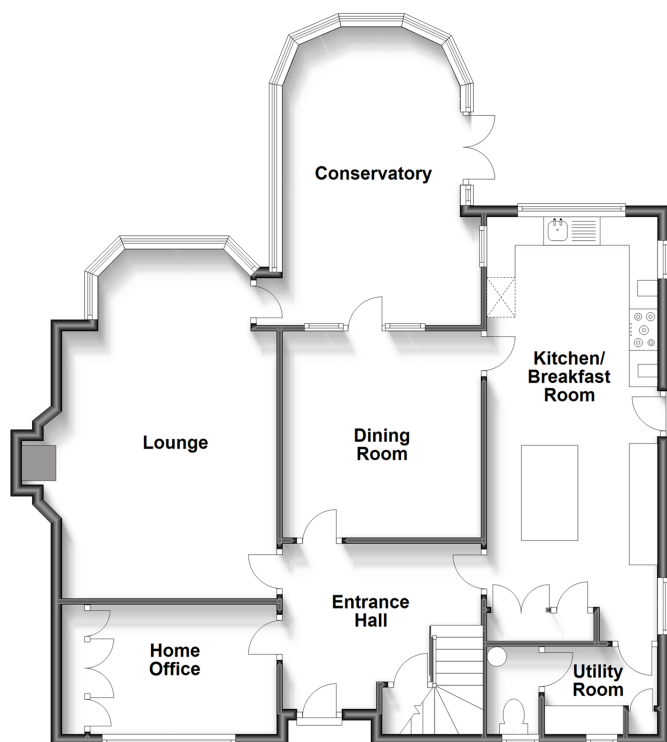
OVER 60?

Secure this property
for up to **59% less!**

Wards
Helping you move forwards

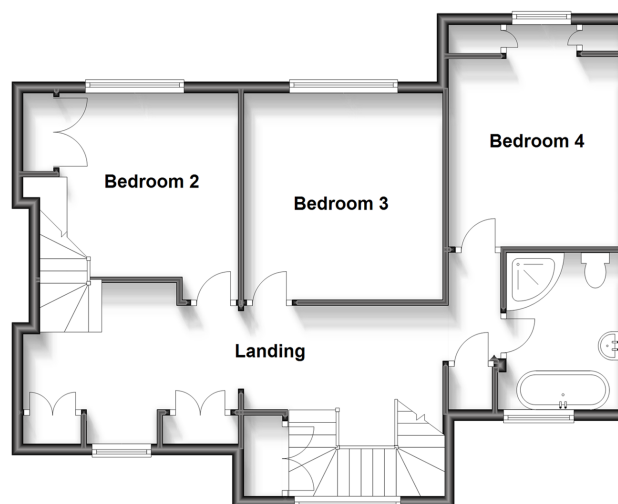
Ground Floor

Approx. 102.1 sq. metres (1099.1 sq. feet)



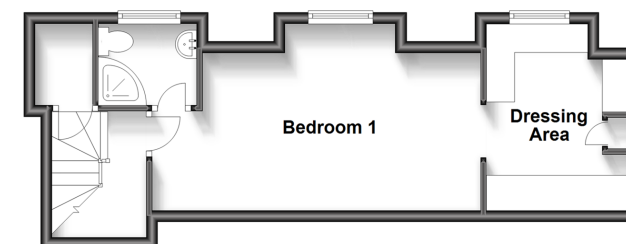
First Floor

Approx. 69.4 sq. metres (746.9 sq. feet)



Second Floor

Approx. 32.9 sq. metres (354.4 sq. feet)



Accommodation

GROUND FLOOR

Entrance Hall
Home Office: 10'7 x 7'5 (3.23m x 2.26m)
Lounge: 20'5 x 14'7 (6.23m x 4.45m)
Dining Room: 12'7 x 11'5 (3.84m x 3.48m)
Conservatory: 17'3 x 11'8 (5.26m x 3.56m)
Kitchen/Breakfast Room: 23'9 x 10'1 (7.24m x 3.08m)
Utility Room: 6'2 x 4'9 (1.88m x 1.45m)

FIRST FLOOR

Landing
Bedroom 2: 12'5 x 11'9 (3.79m x 3.58m)
Bedroom 3: 11'10 x 11'10 (3.61m x 3.61m)
Bedroom 4: 12'7 x 9'9 (3.84m x 2.97m)
Bathroom: 9'8 x 6'8 (2.95m x 2.03m)

SECOND FLOOR

Bedroom 1: 19'1 x 10'8 (5.82m x 3.25m)
Dressing Area: 9'7 x 8'2 (2.92m x 2.49m)
En Suite Shower Room: 5'10 x 4'4 (1.78m x 1.32m)

OUTSIDE

Off Road Parking
Rear Garden



Main features

- Set behind electric gates, this spacious family home has a high specification finish
- Fully fitted home office, ideal for home working
- Stunning and mature, sunny rear garden
- High standard kitchen/breakfast room, with a separate dining room for more formal occasions
- Located on a highly sought after road, short walk to popular Loose Primary School, local shops and the conservation area



Nearest Schools

Primary Schools: Tiger Primary 0.3 miles, Loose Primary 0.6 miles
 Secondary Schools: New Line Learning Academy 0.3 miles, Cornwallis Academy 2.0 miles, Maidstone Grammar School 2.0 miles, St Simon Stock Catholic School 2.1 miles



Transport Information

Train Stations: Maidstone West 2.6 miles, Maidstone Barracks 2.9 miles, Maidstone East 3.0 miles



Address

Pear Tree Lane, Loose, Maidstone, Kent, ME15



Directions

For directions to this property please contact us.



Wards
Helping you move forwards

Call Loose Branch 01622 744067 ■ wardsofkent.co.uk



- Legal advice should be taken to verify fixtures/fittings, planning, alterations and/or lease details
- Appliances & services are untested, dimensions are approximate and floor plans are not to scale
- Through a Homewise Home For Life Plan people aged 60+ can secure this property for up to 59% less, by purchasing a Lifetime Lease.



13021786/20231025/AS/VMK