

OVER 60?

Secure this property
for up to **59% less!**



Price

£425,000

Leasehold

3x  2x  1x 

Hayle Mill, Hayle Mill Road, Maidstone,
Kent, ME15

Wards
Helping you move forwards



Main features

- Unique and charming Grade II listed duplex apartment
- Relax on the balcony with picturesque, scenic views
- 2 allocated parking spaces
- Bright & airy, open plan living space
- Tranquil setting in the conservation area, overlooking the mill pond

Accommodation

GROUND FLOOR

Entrance Hall
Downstairs Cloakroom: 7'4 x 5'3 (2.24m x 1.60m)

SPLIT LEVEL FIRST FLOOR

Landing
Kitchen: 14'7 x 9'8 (4.45m x 2.95m)
Dining Area: 13'3 x 8'7 (4.04m x 2.62m)
Lounge: 25'0 x 13'1 (7.63m x 3.99m)
Balcony
Bedroom 3: 11'5 x 8'9 (3.48m x 2.67m)
Bathroom: 8'9 x 7'8 (2.67m x 2.34m)

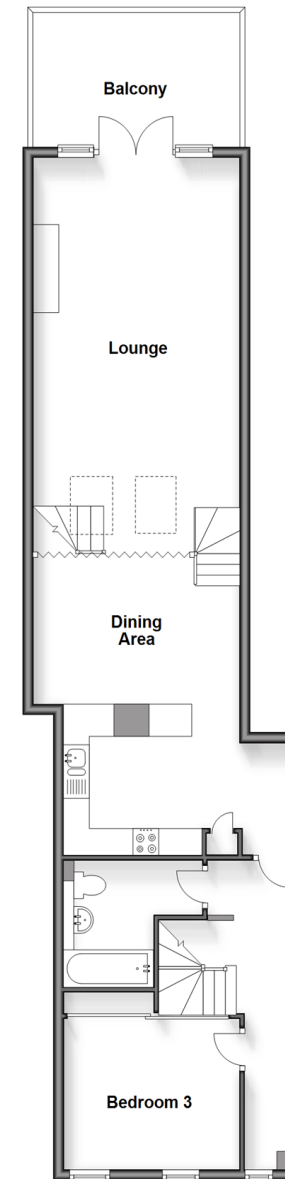
SECOND FLOOR

Landing
Bedroom 1: 14'6 x 10'10 (4.42m x 3.30m)
En Suite Shower Room: 7'7 x 5'5 (2.31m x 1.65m)
Bedroom 2: 14'6 x 8'10 (4.42m x 2.69m)

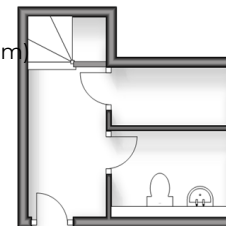
OUTSIDE

Allocated Parking
Communal Gardens

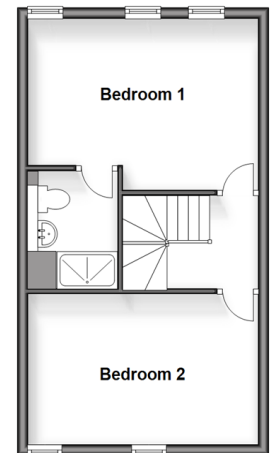
Split Level First Floor
Approx. 78.7 sq. metres (847.6 sq. feet)



Ground Floor
Approx. 10.9 sq. metres (117.5 sq. feet)



Second Floor
Approx. 36.2 sq. metres (389.8 sq. feet)



Call Loose - 01622 744067 ■ wardsofkent.co.uk

- If buying to let, the energy rating will need to be improved to at least 'E' rating before you can let the property
- Legal advice should be taken to verify fixtures/fittings, planning, alterations and/or lease details
- Appliances & services are untested, dimensions are approximate and floor plans are not to scale
- Through a Homewise Home For Life Plan people aged 60+ can secure this property for up to 59% less, by purchasing a Lifetime Lease.



13021801/20240425/KIR/VMK