



**Price**  
**£285,000**

**Freehold**

2x  1x  2x 

**Ashdown Cottages,  
Heath Road, East  
Farleigh, Maidstone,  
Kent, ME15**

**OVER 60?**

Secure this property  
for up to **59% less!**

*Wards*  
Helping you move forwards





## Main features

- Charming character cottage with a wealth of period features
- Offered with no forward chain
- Stunning and extremely generous size rear garden, perfect for the summer months
- Bright and airy kitchen and separate dining room, a superb entertaining space
- Scenic countryside on your doorstep and just a short drive to the neighbouring village with it's array of local shops and amenities

## Accommodation

### GROUND FLOOR

Lounge: 11'9 x 11'5 (3.58m x 3.48m)  
 Dining Room: 9'4 x 8'1 (2.85m x 2.47m)  
 Kitchen: 8'5 x 7'5 (2.57m x 2.26m)  
 Rear Lobby  
 Bathroom: 7'4 x 4'9 (2.24m x 1.45m)

### FIRST FLOOR

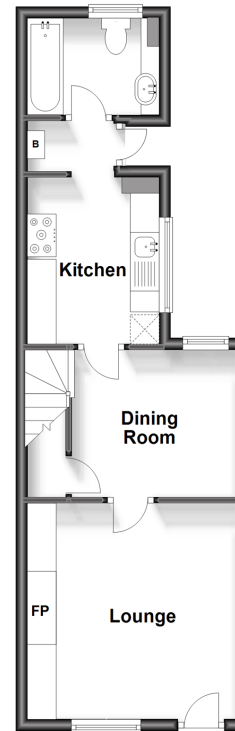
Landing  
 Bedroom 1: 11'10 x 11'10 (3.61m x 3.61m)  
 Bedroom 2: 9'3 x 8'1 (2.82m x 2.47m)

### OUTSIDE

Front and Rear Gardens

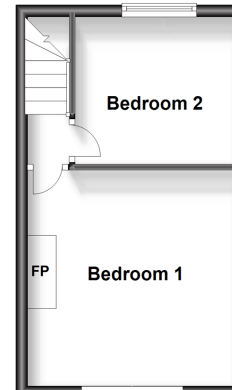
### Ground Floor

Approx. 34.9 sq. metres (375.7 sq. feet)



### First Floor

Approx. 22.8 sq. metres (245.4 sq. feet)



**Call Loose - 01622 744067 ■ wardsofkent.co.uk**

■ Legal advice should be taken to verify fixtures/fittings, planning, alterations and/or lease details  
 ■ Through a Homewise Home For Life Plan people aged 60+ can secure this property for up to 59% less, by purchasing a Lifetime Lease.

■ Appliances & services are untested, dimensions are approximate and floor plans are not to scale



13021820/20230818/AT/AT