



Guide Price

£270,000

Freehold

2x  1x  1x 

**Loose Road, Maidstone,
Kent, ME15**

OVER 60?

Secure this property
for up to **59% less!**

Wards
Helping you move forwards



Main features

- Charming character cottage with a wealth of period features
- Recently re fitted modern kitchen, beautifully finished
- Useful cellar offering additional space that could be utilised as a study, or a gym
- Direct access onto a rear courtyard that leads to a generous size private rear garden
- Walking distance to picturesque Loose village with it's tranquil conservation area, quaint village pub and highly sought after primary school

Accommodation

GROUND FLOOR

Entrance Porch
Lounge: 12'2 x 12'1 (3.71m x 3.69m)
Kitchen: 12'1 x 8'9 (3.69m x 2.67m)
Rear Lobby
Bathroom: 10'10 x 5'9 (3.30m x 1.75m)

BASEMENT

Cellar: 12'0 x 10'8 (3.66m x 3.25m)

FIRST FLOOR

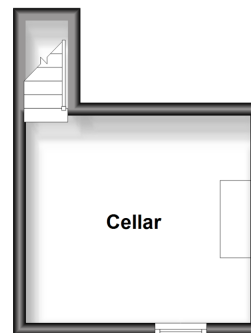
Landing
Bedroom 1: 12'1 x 12'0 (3.69m x 3.66m)
Bedroom 2: 9'3 x 8'10 (2.82m x 2.69m)

OUTSIDE

Front and Rear Gardens

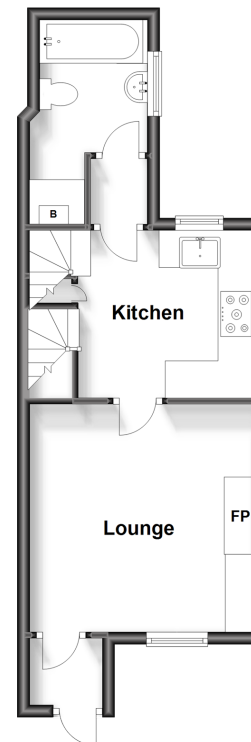
Basement

Approx. 13.4 sq. metres (143.9 sq. feet)



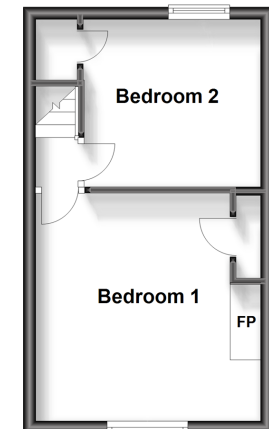
Ground Floor

Approx. 31.5 sq. metres (338.9 sq. feet)



First Floor

Approx. 23.8 sq. metres (256.4 sq. feet)



Call Loose - 01622 744067 ■ wardsofkent.co.uk

- Legal advice should be taken to verify fixtures/fittings, planning, alterations and/or lease details
- Through a Homewise Home For Life Plan people aged 60+ can secure this property for up to 59% less, by purchasing a Lifetime Lease.

- Appliances & services are untested, dimensions are approximate and floor plans are not to scale