

**OVER 60?**

Secure this property  
for up to **59% less!**



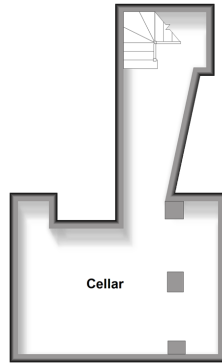
**Guide Price**  
**£800,000**  
**Freehold**

5x  2x  2x 

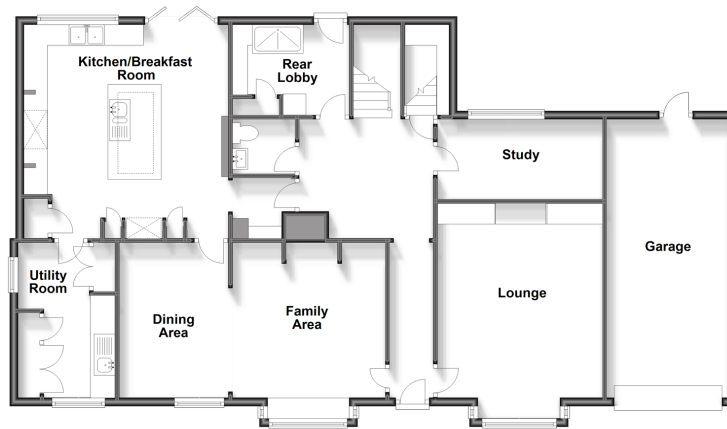
Loose Road, Maidstone, Kent, ME15

*Wards*  
Helping you move forwards

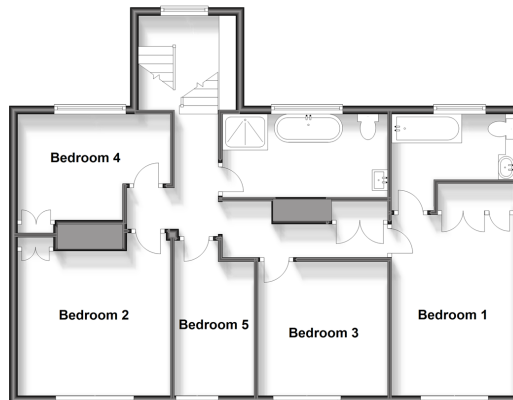
**Basement**  
Approx. 23.6 sq. metres (254.1 sq. feet)



**Ground Floor**  
Approx. 138.0 sq. metres (1485.0 sq. feet)



**First Floor**  
Approx. 87.9 sq. metres (946.2 sq. feet)



## Accommodation

### GROUND FLOOR

Entrance Hall

Downstairs Cloakroom: 5'0 x 4'1 (1.53m x 1.25m)

Lounge: 20'1 x 12'1 (6.13m x 3.69m)

Family Area: 12'3 x 12'0 (3.74m x 3.66m)

Dining Area: 12'3 x 8'6 (3.74m x 2.59m)

Study: 12'1 x 6'0 (3.69m x 1.83m)

Kitchen/Breakfast Room: 17'0 x 16'0 (5.19m x 4.88m)

Utility Room: 12'1 x 7'1 (3.69m x 2.16m)

Rear Lobby: 8'1 x 7'1 (2.47m x 2.16m)

### BASEMENT

Cellar: 27'0 x 16'0 (8.24m x 4.88m)

### FIRST FLOOR

Landing

Bedroom 1: 14'1 x 9'1 (4.30m x 2.77m)

En Suite Bathroom: 9'1 x 7'0 (2.77m x 2.14m)

Bedroom 2: 12'0 x 11'1 (3.66m x 3.38m)

Bedroom 3: 10'1 x 10'1 (3.08m x 3.08m)

Bedroom 4: 11'1 x 8'0 (3.38m x 2.44m)

Bedroom 5: 12'0 x 6'1 (3.66m x 1.86m)

Bathroom: 13'0 x 6'0 (3.97m x 1.83m)

### OUTSIDE

Garage and Driveway

Rear Garden





## Main features

- Stunning character home dating back to 1830
- Beautifully finished kitchen/breakfast room, that's sure to become the hub of the home
- Large, private walled garden, with ample space
- Renovated to a high standard throughout, whilst sympathetically retaining the period features
- Short walk to highly sought after Loose Primary School, the picturesque Loose Valley conservation area and local shops



### Nearest Schools

Primary Schools: Loose Primary 0.0 miles, Tiger Primary 1.1 miles. Secondary Schools: New Line Learning Academy 1.1 miles, Cornwallis Academy 1.4 miles, Maidstone Grammar School 2.3 miles, Maidstone Grammar School for Girls 2.5 miles



### Transport Information

Train Stations: Maidstone West 2.6 miles, Maidstone Barracks 3.0 miles, Maidstone East 3.0 miles



### Address

Loose Road, Maidstone, Kent, ME15



### Directions

For directions to this property please contact us.





**Wards**  
Helping you move forwards

Call Loose Branch 01622 744067 ■ [wardsofkent.co.uk](http://wardsofkent.co.uk)



■ Legal advice should be taken to verify fixtures/fittings, planning, alterations and/or lease details ■ Appliances & services are untested, dimensions are approximate and floor plans are not to scale  
■ Through a Homewise Home For Life Plan people aged 60+ can secure this property for up to 59% less, by purchasing a Lifetime Lease.



13021829/20231128/VMK/VMK