



Price
£300,000

Freehold

2x  1x  1x 

**McAlpine Crescent,
Loose, Maidstone, Kent,
ME15**

OVER 60?

Secure this property
for up to **59% less!**

Wards
Helping you move forwards



Main features

- Beautifully presented home, ideal for first time buyers
- Bright and airy living space, perfect for entertaining
- Both double bedrooms are a great size
- Secure and private sunny rear garden with outbuilding with utility area
- Located in sought after Loose, walking distance to the village pub and the picturesque Loose Valley conservation area

Accommodation

GROUND FLOOR

Entrance Hall
Lounge/Dining Area: 19'5 x 11'0 (5.92m x 3.36m)
Kitchen: 12'9 x 5'8 (3.89m x 1.73m)

FIRST FLOOR

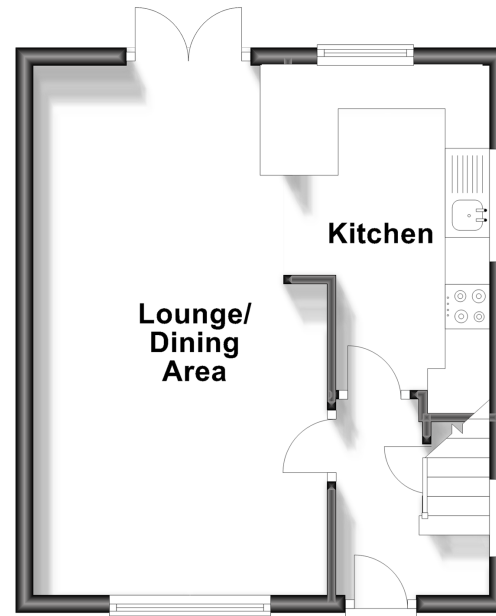
Landing
Bedroom 1: 14'3 x 9'1 (4.35m x 2.77m)
Bedroom 2: 10'6 x 10'3 (3.20m x 3.13m)
Bathroom: 6'4 x 5'9 (1.93m x 1.75m)

OUTSIDE

Front and Rear Gardens
Outbuilding

Ground Floor

Approx. 30.6 sq. metres (329.0 sq. feet)



First Floor

Approx. 30.6 sq. metres (329.0 sq. feet)



Call Loose - 01622 744067 ■ wardsofkent.co.uk

■ Legal advice should be taken to verify fixtures/fittings, planning, alterations and/or lease details
■ Through a Homewise Home For Life Plan people aged 60+ can secure this property for up to 59% less, by purchasing a Lifetime Lease.

■ Appliances & services are untested, dimensions are approximate and floor plans are not to scale