



**Price**

**£750,000**

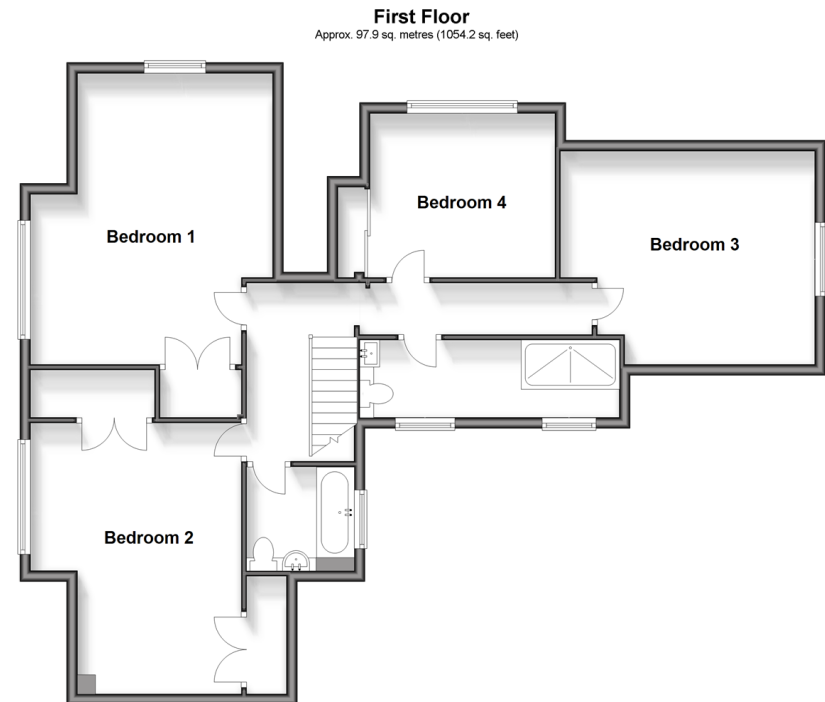
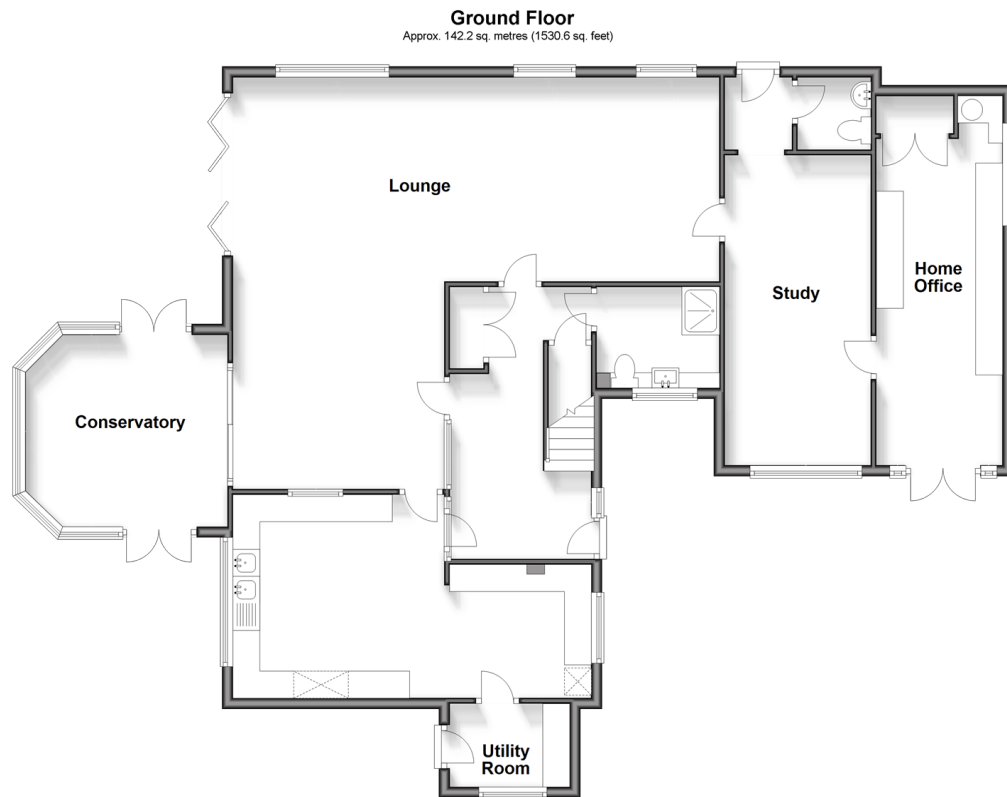
**Freehold**

4x  3x  2x 

Farleigh Lane, Maidstone, Kent, ME16

*Wards*  
Helping you move forwards





## Accommodation

### GROUND FLOOR

Entrance Hall  
 Kitchen Area 1: 12'1 x 12'0 (3.69m x 3.66m)  
 Kitchen Area 2: 8'0 x 7'1 (2.44m x 2.16m)  
 Utility Room: 7'1 x 5'0 (2.16m x 1.53m)  
 Lounge: (L-shaped) 24'1 x 12'0 (7.35m x 3.66m) plus 12'1 x 16'0 (3.69m x 4.88m)  
 Conservatory: 12'1 x 12'1 (3.69m x 3.69m)  
 Study: 18'1 x 8'1 (5.52m x 2.47m)  
 Downstairs Cloakroom: 4'1 x 4'1 (1.25m x 1.25m)  
 Home Office: 23'0 x 7'1 (7.02m x 2.16m)  
 Shower Room 1: 7'0 x 6'0 (2.14m x 1.83m)

### FIRST FLOOR

Landing  
 Bedroom 1: 17'0 x 14'1 (5.19m x 4.30m)  
 Bedroom 2: 16'1 x 12'1 (4.91m x 3.69m)  
 Bedroom 3: 13'1 x 12'0 (3.99m x 3.66m)  
 Bedroom 4: 11'0 x 9'1 (3.36m x 2.77m)  
 Bathroom: 6'0 x 6'0 (1.83m x 1.83m)  
 Shower Room 2: 15'1 x 4'1 (4.60m x 1.25m)

### OUTSIDE

Off Road Parking  
 Front, Side and Rear Gardens  
 Summer House: 10'0 x 7'2 (3.05m x 2.19m)  
 Shed  
 Outbuilding/Home Office: 14'1 x 11'1 (4.30m x 3.38m)  
 2 Outbuildings



## Main features

- Unique and spacious home set in a generous gated plot
- Private and secure garden
- Versatile layout, with a study, home office and outbuilding/home office, ideal for a home run business, or additional living space
- Semi rural village location, walking distance to East Farleigh mainline train station
- NO FORWARD CHAIN



### Nearest Schools

Primary Schools: East Farleigh Primary 0.5 miles, West Borough Primary 0.8 miles, Barming Primary 0.8 miles  
Secondary Schools: Oakwood Park Grammar School 1.0 miles, St Augustine Academy 1.0 miles, St Simon Stock Catholic School 1.2 miles



### Transport Information

Train Stations: East Farleigh 0.5 miles, Maidstone West 1.6 miles, Maidstone Barracks 1.9 miles



### Address

Farleigh Lane, Maidstone, Kent, ME16



### Directions

For directions to this property please contact us.





*Wards*  
Helping you move forwards

Call Loose Branch 01622 744067 ■ [wardsofkent.co.uk](http://wardsofkent.co.uk)



■ Legal advice should be taken to verify fixtures/fittings, planning, alterations and/or lease details ■ Appliances & services are untested, dimensions are approximate and floor plans are not to scale



13021859/20240411/AY/VMK