



**Guide Price**  
**£530,000**

**Freehold**

4x  1x  1x 

**Park Way, Coxheath,  
Maidstone, Kent, ME17**

**OVER 60?**

Secure this property  
for up to **59% less!**

*Wards*  
Helping you move forwards





## Main features

- A spacious family home, with potential to extend, subject to planning and consents
- Large rear garden, with mature shrubs and trees
- Popular village location
- Short walk to local shops, amenities and sought after Coxheath Primary School
- Well presented throughout, with a modern kitchen

## Accommodation

### GROUND FLOOR

Entrance Hall  
Downstairs Cloakroom: 5'0 x 2'1 (1.53m x 0.64m)  
Lounge: 23'0 x 13'1 (7.02m x 3.99m)  
Dining Area: 11'0 x 10'0 (3.36m x 3.05m)  
Kitchen: 23'0 x 8'0 (7.02m x 2.44m)

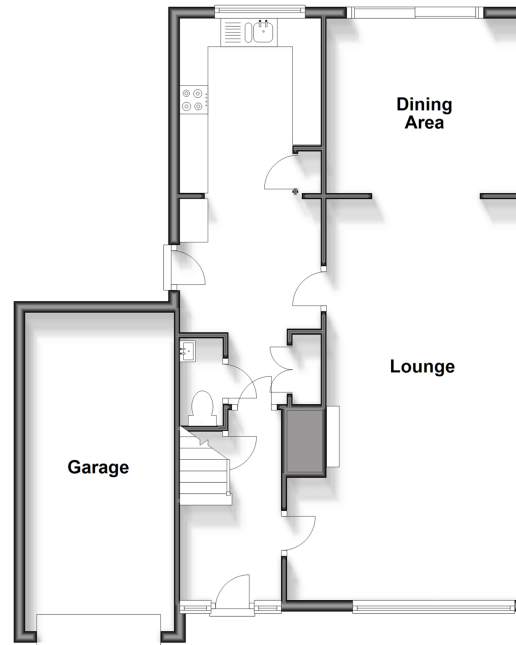
### FIRST FLOOR

Landing  
Bedroom 1: 13'1 x 11'1 (3.99m x 3.38m)  
Bedroom 2: 11'1 x 9'0 (3.38m x 2.75m)  
Bedroom 3: 16'1 x 8'1 (4.91m x 2.47m)  
Bedroom 4: 8'1 x 8'0 (2.47m x 2.44m)  
Bathroom: 8'0 x 6'0 (2.44m x 1.83m)

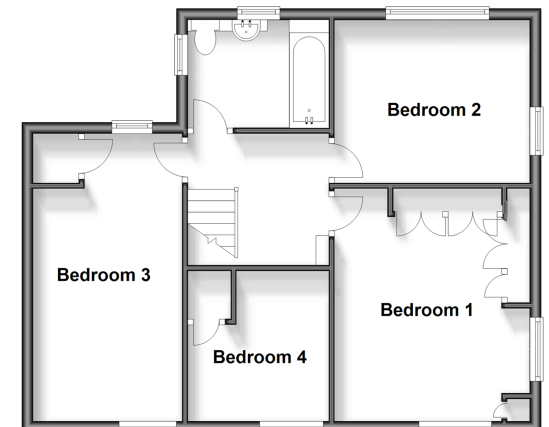
### OUTSIDE

Garage and Driveway  
Front and Rear Gardens

**Ground Floor**  
Approx. 78.6 sq. metres (845.6 sq. feet)



**First Floor**  
Approx. 57.6 sq. metres (619.6 sq. feet)



**Call Loose - 01622 744067 ■ [wardsofKent.co.uk](http://wardsofKent.co.uk)**

■ Legal advice should be taken to verify fixtures/fittings, planning, alterations and/or lease details  
■ Through a Homewise Home For Life Plan people aged 60+ can secure this property for up to 59% less, by purchasing a Lifetime Lease.

■ Appliances & services are untested, dimensions are approximate and floor plans are not to scale



13021871/20240208/VMK/AS