



Price
£300,000

Freehold

3x  1x  1x 

**Northleigh Close,
Maidstone, Kent, ME15**

OVER 60?

Secure this property
for up to **59% less!**

Wards
Helping you move forwards



Main features

- **Spacious home spread over 3 floors, with all bedrooms being double in size**
- **Conveniently situated, just a short walk to sought after Loose Primary School, local shops and amenities**
- **Located at the end of a popular cul de sac**
- **Picturesque Loose Valley conservation area nearby for a weekend stroll**
- **NO FORWARD CHAIN**

Accommodation

GROUND FLOOR

Entrance Porch
Hallway
Downstairs Cloakroom: 5'6 x 2'6 (1.68m x 0.76m)
Kitchen/Diner: 13'9 x 11'10 (4.19m x 3.61m)

FIRST FLOOR

Landing
Lounge: 15'0 x 11'6 (4.58m x 3.51m)
Bedroom 3: 15'1 x 7'5 (4.60m x 2.26m)
Bathroom: 7'10 x 6'0 (2.39m x 1.83m)

SECOND FLOOR

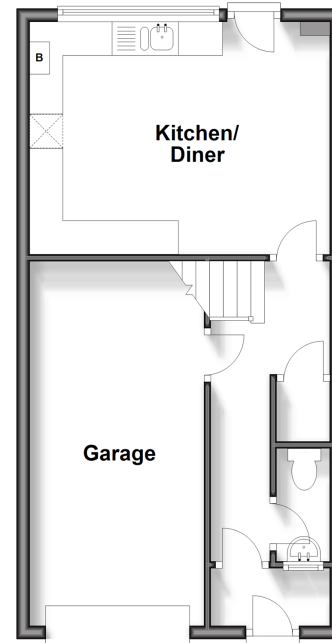
Landing
Bedroom 1: 15'1 x 9'0 (4.60m x 2.75m)
Bedroom 2: 12'0 x 8'6 (3.66m x 2.59m)

OUTSIDE

Garage and Driveway
Rear Garden

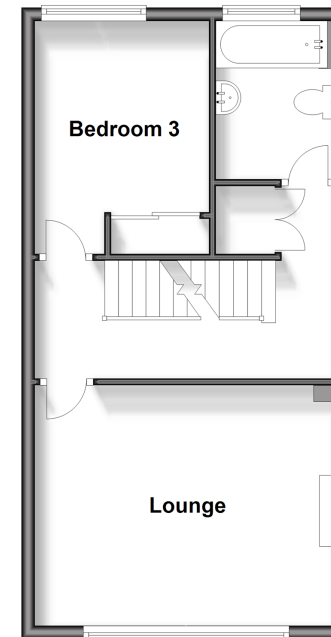
Ground Floor

Approx. 40.7 sq. metres (438.4 sq. feet)



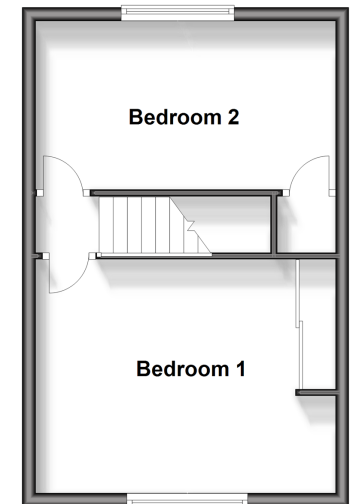
First Floor

Approx. 40.7 sq. metres (438.4 sq. feet)



Second Floor

Approx. 31.9 sq. metres (342.9 sq. feet)



Call Loose - 01622 744067 ■ wardsofkent.co.uk

- Legal advice should be taken to verify fixtures/fittings, planning, alterations and/or lease details
- Through a Homewise Home For Life Plan people aged 60+ can secure this property for up to 59% less, by purchasing a Lifetime Lease.

- Appliances & services are untested, dimensions are approximate and floor plans are not to scale



13021901/20240508/AS/AS