

OVER 60?

Secure this property
for up to **59% less!**



Price
£900,000
Freehold

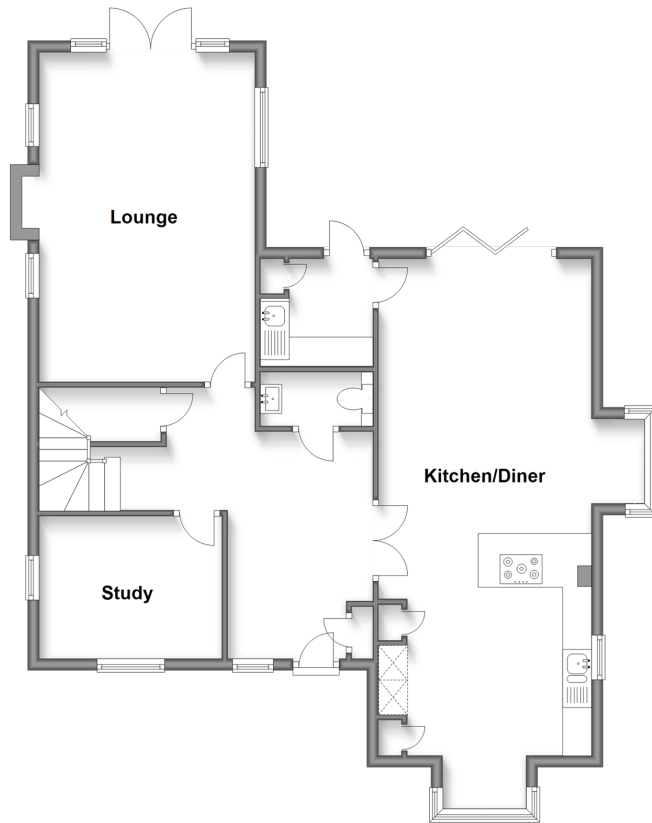
4x  3x  2x 

Vicarage Fields, Linton, Maidstone, Kent,
ME17

Wards
Helping you move forwards

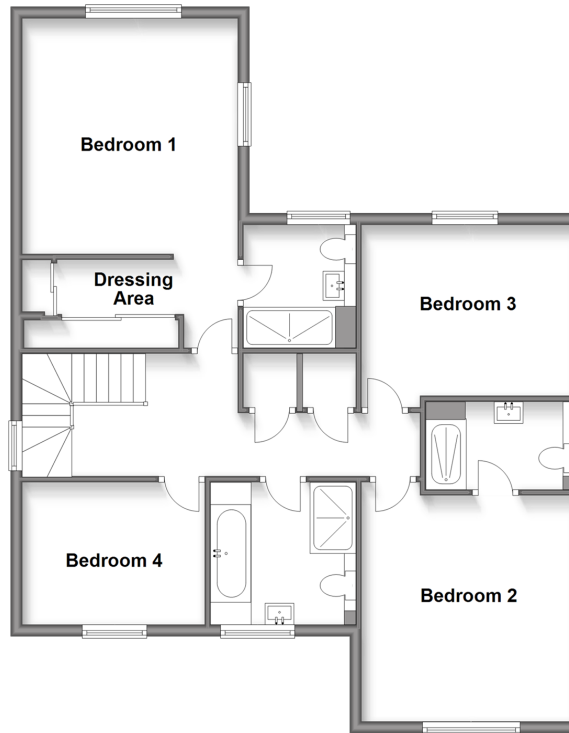
Ground Floor

Approx. 87.9 sq. metres (946.0 sq. feet)



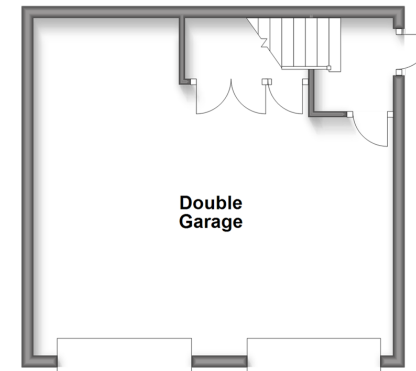
First Floor

Approx. 85.5 sq. metres (920.6 sq. feet)



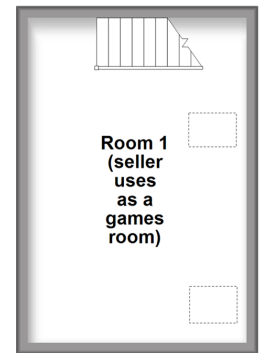
Outbuilding Ground Floor

Approx. 36.1 sq. metres (388.7 sq. feet)



Outbuilding First Floor

Approx. 21.2 sq. metres (227.9 sq. feet)



Accommodation

GROUND FLOOR

Entrance Hall
Downstairs Cloakroom: 6'0 x 3'0 (1.83m x 0.92m)
Study: 10'0 x 8'0 (3.05m x 2.44m)
Lounge: 18'1 x 12'0 (5.52m x 3.66m)
Kitchen/Diner: 31'1 x 15'1 (9.48m x 4.60m)
Utility Room: 7'0 x 6'0 (2.14m x 1.83m)

FIRST FLOOR

Landing
Bedroom 1: 18'1 x 12'0 (5.52m x 3.66m)
Dressing Area: 6'1 x 3'0 (1.86m x 0.92m)
En Suite Shower Room 1: 7'0 x 5'1 (2.14m x 1.55m)
Bedroom 2: 13'0 x 12'0 (3.97m x 3.66m)
En Suite Shower Room 2: 8'1 x 4'1 (2.47m x 1.25m)
Bedroom 3: 12'0 x 10'1 (3.66m x 3.08m)
Bedroom 4: 10'1 x 8'0 (3.08m x 2.44m)
Bathroom: 8'0 x 8'0 (2.44m x 2.44m)

OUTBUILDING GROUND FLOOR

Double Garage

OUTBUILDING FIRST FLOOR

Room 1 (Used as Games Room) : 18'0 x 12'0 (5.49m x 3.66m)

OUTSIDE

Front and Rear Gardens
Driveway



Main features

- Stunning, spacious executive home on an exclusive development
- Relax around the fire in the cosy lounge
- Useful study, ideal for those working from home
- Large double garage, with a fully converted room above, currently utilised as a games room
- Located in semi rural Linton village, surrounded by picturesque countryside, yet still accessible to local amenities and mainline train stations



Nearest Schools

Primary Schools: Coxheath Primary 1.1 miles, Boughton Monchelsea Primary 1.1 miles, Loose Primary 1.7 miles
Secondary Schools: Cornwallis Academy 0.9 miles, Maidstone Grammar School 3.3 miles, Oakwood Park Grammar School 3.5 miles



Transport Information

Train Stations: Marden 3.1 miles, East Farleigh 3.3 miles, Maidstone West 3.5 miles



Address

Vicarage Fields, Linton, Maidstone, Kent, ME17



Directions

For directions to this property please contact us.



Call Loose Branch 01622 744067 ■ wardsofkent.co.uk



- Legal advice should be taken to verify fixtures/fittings, planning, alterations and/or lease details
- Appliances & services are untested, dimensions are approximate and floor plans are not to scale
- Through a Homewise Home For Life Plan people aged 60+ can secure this property for up to 59% less, by purchasing a Lifetime Lease.



13021907/20240508/AS/VMK