



OVER 60?

Secure this property
for up to **59% less!**

Price

£450,000

Freehold

3x  1x  4x 

**Paynes Lane, Maidstone,
Kent, ME15**

Wards
Helping you move forwards



Main features

- **Substantially extended house with period features, offering a spacious and versatile layout**
- **Large garden with a useful workshop that could have multiple uses**
- **Lots of potential throughout to put your own stamp on and create your dream home**
- **Located in a sought after road, short walk to popular schools, local shops, amenities and the picturesque Loose Valley conservation area**
- **NO FORWARD CHAIN**

Accommodation

GROUND FLOOR

Entrance Hall
 Study/Snug: 10'0 x 8'0 (3.05m x 2.44m)
 Lounge: 13'1 x 12'1 (3.99m x 3.69m)
 Dining Room: 13'1 x 13'0 (3.99m x 3.97m)
 Family Room: 11'0 x 6'0 (3.36m x 1.83m)
 Downstairs Cloakroom: 6'0 x 2'1 (1.83m x 0.64m)
 Kitchen: 12'1 x 6'0 (3.69m x 1.83m)
 Breakfast Area: 13'0 x 9'1 (3.97m x 2.77m)
 Conservatory: 22'0 x 10'0 (6.71m x 3.05m)

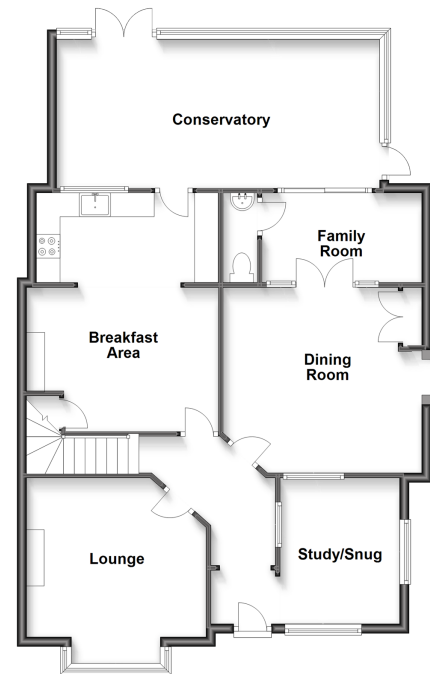
FIRST FLOOR

Landing
 Bedroom 1: 13'1 x 12'1 (3.99m x 3.69m)
 Bedroom 2: 13'1 x 13'1 (3.99m x 3.99m)
 Bedroom 3: 9'1 x 7'1 (2.77m x 2.16m)
 Bathroom

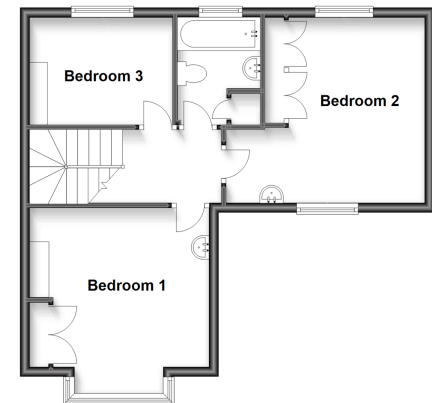
OUTSIDE

Off Road Parking
 Front and Rear Gardens
 Workshop: 22'1 x 11'0 (6.74m x 3.36m)

Ground Floor
 Approx. 98.0 sq. metres (1054.5 sq. feet)



First Floor
 Approx. 46.6 sq. metres (501.5 sq. feet)



Call Loose - 01622 744067 ■ wardsofkent.co.uk

■ Legal advice should be taken to verify fixtures/fittings, planning, alterations and/or lease details
 ■ Through a Homewise Home For Life Plan people aged 60+ can secure this property for up to 59% less, by purchasing a Lifetime Lease.

■ Appliances & services are untested, dimensions are approximate and floor plans are not to scale