

OVER 60?

Secure this property
for up to **59% less!**



Guide Price
£200,000
Leasehold

2x  1x  1x 

Mace Court, Coxheath, Maidstone, Kent,
ME17

Wards
Helping you move forwards



Main features

- **Stunning first floor duplex apartment**
- **Allocated parking, with additional visitor parking**
- **Well kept communal garden for residents use**
- **Larger than the average apartment, this home needs to be viewed to be fully appreciated**
- **Located in the heart of Coxheath village, with local shops, amenities, bus stop and Coxheath Primary School on your doorstep and countryside nearby**

Accommodation

FIRST FLOOR

Entrance Hall
 Kitchen: 7'1 x 7'1 (2.16m x 2.16m)
 Bedroom 1: 13'0 x 12'1 (3.97m x 3.69m)
 Juliet Balcony
 Bedroom 2: 11'0 x 10'1 (3.36m x 3.08m)
 Bathroom: 12'1 x 5'1 (3.69m x 1.55m)

SECOND FLOOR

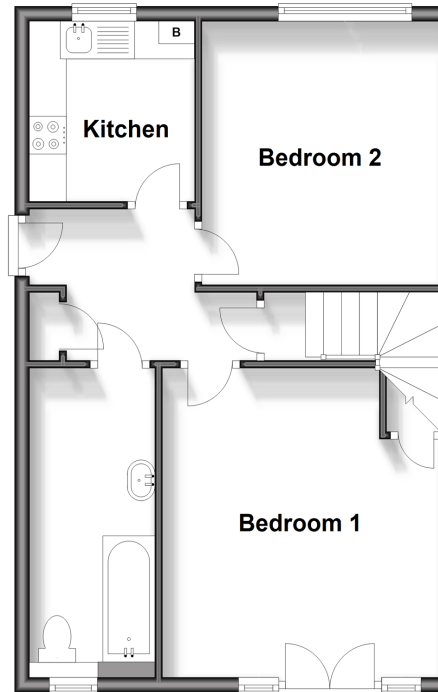
Lounge: 21'0 x 18'1 (6.41m x 5.52m)

OUTSIDE

Allocated Parking
 Communal Garden

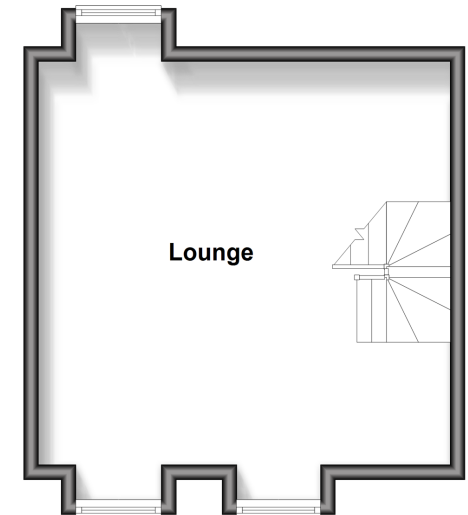
First Floor

Approx. 48.3 sq. metres (520.4 sq. feet)



Second Floor

Approx. 31.3 sq. metres (337.0 sq. feet)



Call Loose - 01622 744067 ■ wardsofkent.co.uk

■ Legal advice should be taken to verify fixtures/fittings, planning, alterations and/or lease details
 ■ Through a Homewise Home For Life Plan people aged 60+ can secure this property for up to 59% less, by purchasing a Lifetime Lease.

■ Appliances & services are untested, dimensions are approximate and floor plans are not to scale